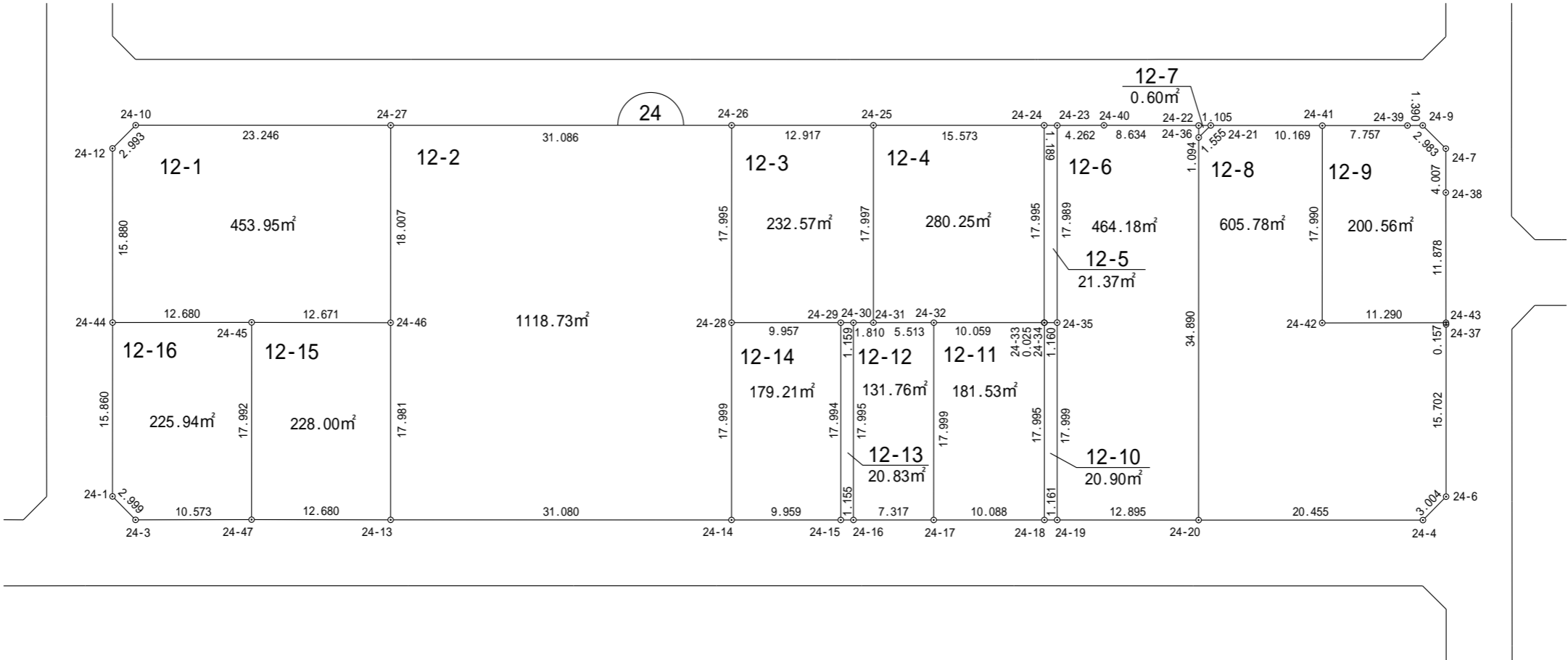
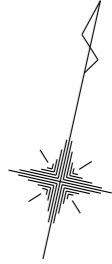


一宮町東浪見土地区画整理事業 画地確定図

長生郡一宮町東野



縮尺 1:500

座標法面積計算書

地番名	12-1					
点名	X	Y	距離	方向角	$X_{n+1} - X_{n-1}$	$Y_n \cdot (X_{n+1} - X_{n-1})$
24-44	-69888.595	48340.358	12.680	77° 22' 39"	-12.728	-615276.076624
24-45	-69885.824	48352.732	12.671	77° 34' 54"	5.496	265746.615072
24-46	-69883.099	48365.107	18.007	347° 27' 56"	20.303	981956.767421
24-27	-69865.521	48361.199	23.246	257° 27' 02"	12.527	605820.739873
24-10	-69870.572	48338.508	2.993	212° 31' 00"	-7.575	-366164.198100
24-12	-69873.096	48336.899	15.880	167° 25' 09"	-18.023	-871175.930677
倍面積						907.916965
面積						453.95 m ²

座標法面積計算書

地番名	12-2					
点名	X	Y	距離	方向角	$X_{n+1} - X_{n-1}$	$Y_n \cdot (X_{n+1} - X_{n-1})$
24-13	-69900.650	48369.018	31.080	77° 28' 11"	-10.808	-522772.346544
24-14	-69893.907	48399.358	17.999	347° 26' 49"	24.312	1176685.191696
24-28	-69876.338	48395.446	17.995	347° 28' 36"	35.136	1700422.390656
24-26	-69858.771	48391.544	31.086	257° 27' 33"	10.817	523451.331448
24-27	-69865.521	48361.199	18.007	167° 27' 56"	-24.328	-1176531.249272
24-46	-69883.099	48365.107	17.981	167° 26' 16"	-35.129	-1699017.843803
					倍面積	2237.474181
					面積	1118.73 m ²

座標法面積計算書

地番名	12-3					
点名	X	Y	距離	方向角	$X_{n+1} - X_{n-1}$	$Y_n \cdot (X_{n+1} - X_{n-1})$
24-28	-69876.338	48395.446	9.957	77° 26' 51"	-15.403	-745435.054738
24-29	-69874.174	48405.165	1.159	77° 26' 59"	2.416	116946.878640
24-30	-69873.922	48406.297	1.810	77° 22' 06"	0.648	31367.280456
24-31	-69873.526	48408.064	17.997	347° 26' 44"	17.963	869554.053632
24-25	-69855.959	48404.152	12.917	257° 25' 37"	14.755	714203.262760
24-26	-69858.771	48391.544	17.995	167° 28' 36"	-20.379	-986171.275176
倍 面 積						465.145574
面 積						232.57 m ²

座標法面積計算書

地番名	12-4					
点名	X	Y	距離	方向角	$X_{n+1} - X_{n-1}$	$Y_n \cdot (X_{n+1} - X_{n-1})$
24-31	-69873.526	48408.064	5.513	77° 27' 40"	-16.370	-792440.007680
24-32	-69872.329	48413.446	10.059	77° 27' 16"	3.382	163734.274372
24-33	-69870.144	48423.265	17.995	347° 26' 51"	19.750	956359.483750
24-24	-69852.579	48419.354	15.573	257° 27' 53"	14.185	686828.536490
24-25	-69855.959	48404.152	17.997	167° 26' 44"	-20.947	-1013921.771944
					倍 面 積	560.514988
					面 積	280.25 m ²

座標法面積計算書

地番名	12-5					
点名	X	Y	距離	方向角	$X_{n+1} - X_{n-1}$	$Y_n \cdot (X_{n+1} - X_{n-1})$
24-33	-69870.144	48423.265	0.025	76° 30' 15"	-17.559	-850264.110135
24-34	-69870.138	48423.290	1.160	77° 12' 32"	0.263	12735.325270
24-35	-69869.881	48424.422	17.989	347° 27' 23"	17.817	862777.926774
24-23	-69852.321	48420.515	1.189	257° 28' 16"	17.302	837771.750530
24-24	-69852.579	48419.354	17.995	167° 26' 51"	-17.823	-862978.146342
					倍 面積	42.746097
					面積	21.37 m ²

座標法面積計算書

地番名	12-6					
点名	X	Y	距離	方向角	$X_{n+1} - X_{n-1}$	$Y_n \cdot (X_{n+1} - X_{n-1})$
24-19	-69887.451	48428.330	12.895	77° 28' 41"	-14.774	-715480.147420
24-20	-69884.655	48440.919	34.890	347° 27' 51"	36.855	1785290.069745
24-36	-69850.596	48433.346	1.094	347° 20' 06"	35.127	1701318.144942
24-22	-69849.528	48433.106	8.634	257° 32' 22"	-0.795	-38504.319270
24-40	-69851.391	48424.675	4.262	257° 23' 54"	-2.793	-135250.117275
24-23	-69852.321	48420.515	17.989	167° 27' 23"	-18.490	-895295.322350
24-35	-69869.881	48424.422	17.999	167° 27' 37"	-35.130	-1701149.944860
					倍 面 積	928.363512
					面 積	464.18 m ²

座標法面積計算書

地番名	12-7					
点名	X	Y	距離	方向角	$X_{n+1} - X_{n-1}$	$Y_n \cdot (X_{n+1} - X_{n-1})$
24-36	-69850.596	48433.346	1.555	32° 35' 13"	0.243	11769.303078
24-21	-69849.285	48434.184	1.105	257° 17' 49"	1.068	51727.708512
24-22	-69849.528	48433.106	1.094	167° 20' 06"	-1.311	-63495.801966
					倍 面 積	1.209624
					面 積	0.60 m ²

座標法面積計算書

地番名	12-8					
点名	X	Y	距離	方向角	$X_{n+1} - X_n$	$Y_n \cdot (X_{n+1} - X_n)$
24-20	-69884.655	48440.919	20.455	77° 27' 40"	-29.618	-1434723.138942
24-4	-69880.214	48460.887	3.004	32° 05' 32"	6.986	338547.756582
24-6	-69877.669	48462.483	15.702	347° 26' 21"	17.872	866121.496176
24-37	-69862.342	48459.068	0.157	345° 15' 23"	15.479	750097.913572
24-43	-69862.190	48459.028	11.290	257° 23' 21"	-2.313	-112085.731764
24-42	-69864.655	48448.010	17.990	347° 29' 36"	15.099	731516.502990
24-41	-69847.091	48444.114	10.169	257° 32' 27"	15.370	744586.032180
24-21	-69849.285	48434.184	1.555	212° 35' 13"	-3.505	-169761.814920
24-36	-69850.596	48433.346	34.890	167° 27' 51"	-35.370	-1713087.448020
					倍 面 積	1211.567854
					面 積	605.78 m ²

座標法面積計算書

地番名	12-9					
点名	X	Y	距離	方向角	$X_{n+1} - X_{n-1}$	$Y_n \cdot (X_{n+1} - X_{n-1})$
24-41	-69847.091	48444.114	17.990	167° 29' 36"	-19.260	-933033.635640
24-42	-69864.655	48448.010	11.290	77° 23' 21"	-15.099	-731516.502990
24-43	-69862.190	48459.028	11.878	347° 21' 22"	14.055	681091.638540
24-38	-69850.600	48456.428	4.007	347° 26' 53"	15.502	751171.546856
24-7	-69846.688	48455.557	2.983	302° 27' 34"	5.513	267135.485741
24-9	-69845.087	48453.040	1.390	257° 12' 11"	1.293	62649.780720
24-39	-69845.395	48451.684	7.757	257° 22' 19"	-2.004	-97097.174736
					倍 面 積	401.138491
					面 積	200.56 m ²

座標法面積計算書

地番名	12-10					
点名	X	Y	距離	方向角	$X_{n+1} - X_{n-1}$	$Y_n \cdot (X_{n+1} - X_{n-1})$
24-18	-69887.704	48427.196	1.161	77° 25' 23"	-17.313	-838420.044348
24-19	-69887.451	48428.330	17.999	347° 27' 37"	17.823	863138.125590
24-35	-69869.881	48424.422	1.160	257° 12' 32"	17.313	838372.018086
24-34	-69870.138	48423.290	17.995	167° 27' 49"	-17.823	-863048.297670
					倍 面積	41.801658
					面積	20.90 m ²

座標法面積計算書

地番名	12-11					
点名	X	Y	距離	方向角	$X_{n+1} - X_{n-1}$	$Y_n \cdot (X_{n+1} - X_{n-1})$
24-17	-69889.900	48417.349	10.088	77° 25' 41"	-15.375	-744416.740875
24-18	-69887.704	48427.196	17.995	347° 27' 49"	19.762	957018.247352
24-34	-69870.138	48423.290	0.025	256° 30' 15"	17.560	850312.972400
24-33	-69870.144	48423.265	10.059	257° 27' 16"	-2.191	-106095.373615
24-32	-69872.329	48413.446	17.999	167° 28' 35"	-19.756	-956456.039176
					倍 面積	363.066086
					面積	181.53 m ²

座標法面積計算書

地番名	12-12					
点名	X	Y	距離	方向角	$X_{n+1} - X_{n-1}$	$Y_n \cdot (X_{n+1} - X_{n-1})$
24-16	-69891.488	48410.206	7.317	77° 27' 58"	-15.978	-773498.271468
24-17	-69889.900	48417.349	17.999	347° 28' 35"	19.159	927627.989491
24-32	-69872.329	48413.446	5.513	257° 27' 40"	16.374	792721.764804
24-31	-69873.526	48408.064	1.810	257° 22' 06"	-1.593	-77114.045952
24-30	-69873.922	48406.297	17.995	167° 27' 15"	-17.962	-869473.906714
					倍 面積	263.530161
					面積	131.76 m ²

座標法面積計算書

地番名	12-13					
点名	X	Y	距離	方向角	$X_{n+1} - X_{n-1}$	$Y_n \cdot (X_{n+1} - X_{n-1})$
24-15	-69891.738	48409.078	1.155	77° 30' 12"	-17.314	-838154.776492
24-16	-69891.488	48410.206	17.995	347° 27' 15"	17.816	862476.230096
24-30	-69873.922	48406.297	1.159	257° 26' 59"	17.314	838106.626258
24-29	-69874.174	48405.165	17.994	167° 26' 26"	-17.816	-862386.419640
					倍 面積	41.660222
					面積	20.83 m ²

座標法面積計算書

地番名	12-14					
点名	X	Y	距離	方向角	$X_{n+1} - X_{n-1}$	$Y_n \cdot (X_{n+1} - X_{n-1})$
24-14	-69893.907	48399.358	9.959	77° 25' 14"	-15.400	-745350.113200
24-15	-69891.738	48409.078	17.994	347° 26' 26"	19.733	955256.336174
24-29	-69874.174	48405.165	9.957	257° 26' 51"	15.400	745439.541000
24-28	-69876.338	48395.446	17.999	167° 26' 49"	-19.733	-954987.335918
					倍 面積	358.428056
					面積	179.21 m ²

座標法面積計算書

地番名	12-15					
点名	X	Y	距離	方向角	$X_{n+1} - X_{n-1}$	$Y_n \cdot (X_{n+1} - X_{n-1})$
24-47	-69903.388	48356.637	12.680	77° 31' 48"	-14.826	-716935.500162
24-13	-69900.650	48369.018	17.981	347° 26' 16"	20.289	981359.006202
24-46	-69883.099	48365.107	12.671	257° 34' 54"	14.826	717061.076382
24-45	-69885.824	48352.732	17.992	167° 27' 55"	-20.289	-981028.579548
					倍 面積	456.002874
					面積	228.00 m ²

座標法面積計算書

地番名	12-16					
点名	X	Y	距離	方向角	$X_{n+1} - X_{n-1}$	$Y_n \cdot (X_{n+1} - X_{n-1})$
24-1	-69904.077	48343.800	2.999	122° 49' 54"	-17.108	-827065.730400
24-3	-69905.703	48346.320	10.573	77° 21' 11"	0.689	33310.614480
24-47	-69903.388	48356.637	17.992	347° 27' 55"	19.879	961281.586923
24-45	-69885.824	48352.732	12.680	257° 22' 39"	14.793	715281.964476
24-44	-69888.595	48340.358	15.860	167° 27' 57"	-18.253	-882356.554574
					倍 面積	451.880905
					面積	225.94 m ²