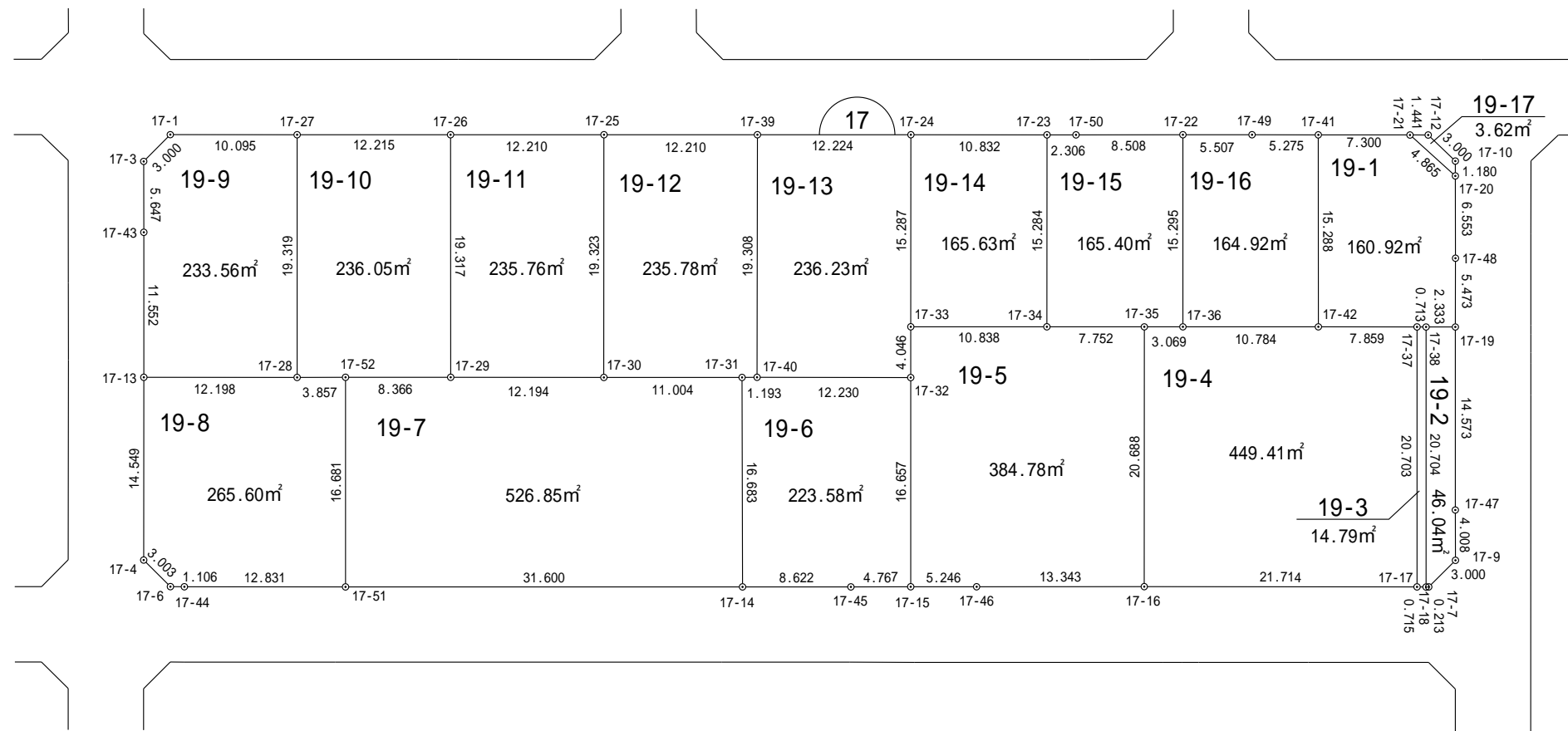
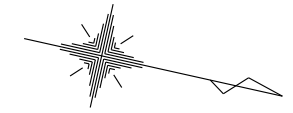


# 一宮町東浪見土地区画整理事業 画地確定図

長生郡一宮町東野



縮尺 1:500

## 座標法面積計算書

地番名	19-1					
点名	X	Y	距離	方向角	$X_{n+1} - X_n$	$Y_n \cdot (X_{n+1} - X_n)$
17-41	-70040.939	48504.955	15.288	77° 26' 47"	-3.804	-184512.848820
17-42	-70037.616	48519.878	7.859	347° 28' 45"	10.996	533524.578488
17-37	-70029.943	48518.174	0.713	347° 32' 27"	8.370	406097.116380
17-38	-70029.246	48518.020	2.333	347° 30' 02"	2.975	144341.109500
17-19	-70026.968	48517.515	5.473	257° 32' 26"	1.097	53223.713955
17-48	-70028.149	48512.170	6.553	257° 23' 12"	-2.612	-126713.788040
17-20	-70029.580	48505.775	4.865	209° 33' 28"	-5.663	-274688.203825
17-21	-70033.812	48503.375	7.300	167° 30' 00"	-11.359	-550949.836625
倍面積						321.841013
面積						160.92 m <sup>2</sup>

## 座標法面積計算書

地番名	19-2					
点名	X	Y	距離	方向角	$X_{n+1} - X_{n-1}$	$Y_n \cdot (X_{n+1} - X_{n-1})$
17-38	-70029.246	48518.020	20.704	77° 26' 50"	2.222	107807.040440
17-18	-70024.746	48538.230	0.213	347° 00' 19"	4.708	228517.986840
17-7	-70024.538	48538.182	3.000	302° 32' 08"	1.822	88436.567604
17-9	-70022.924	48535.652	4.008	257° 19' 09"	0.734	35625.168568
17-47	-70023.804	48531.741	14.573	257° 27' 39"	-4.044	-196262.360604
17-19	-70026.968	48517.515	2.333	167° 30' 02"	-5.442	-264032.316630
					倍 面積	92.086218
					面積	46.04 m <sup>2</sup>

## 座標法面積計算書

地番名	19-3					
点名	X	Y	距離	方向角	$X_{n+1} - X_{n-1}$	$Y_n \cdot (X_{n+1} - X_{n-1})$
17-37	-70029.943	48518.174	20.703	77° 27' 07"	3.801	184417.579374
17-17	-70025.445	48538.383	0.715	347° 39' 13"	5.197	252253.976451
17-18	-70024.746	48538.230	20.704	257° 26' 50"	-3.801	-184493.812230
17-38	-70029.246	48518.020	0.713	167° 32' 27"	-5.197	-252148.149940
					倍 面積	29.593655
					面積	14.79 m <sup>2</sup>

## 座標法面積計算書

地番名	19-4					
点名	X	Y	距離	方向角	$X_{n+1} - X_{n-1}$	$Y_n \cdot (X_{n+1} - X_{n-1})$
17-35	-70051.139	48522.888	20.688	77° 27' 14"	1.498	72687.286224
17-16	-70046.645	48543.082	21.714	347° 30' 09"	25.694	1247265.948908
17-17	-70025.445	48538.383	20.703	257° 27' 07"	16.702	810688.072866
17-37	-70029.943	48518.174	7.859	167° 28' 45"	-12.171	-590514.695754
17-42	-70037.616	48519.878	10.784	167° 26' 49"	-18.200	-883061.779600
17-36	-70048.143	48522.222	3.069	167° 28' 02"	-13.523	-656166.008106
倍面積						898.824538
面積						449.41 m <sup>2</sup>

## 座標法面積計算書

地番名	19-5					
点名	X	Y	距離	方向角	$X_{n+1} - X_{n-1}$	$Y_n \cdot (X_{n+1} - X_{n-1})$
17-33	-70069.287	48526.922	4.046	77° 28' 05"	-9.702	-470808.197244
17-32	-70068.409	48530.872	16.657	77° 26' 53"	4.498	218291.862256
17-15	-70064.789	48547.131	5.246	347° 25' 43"	8.741	424350.472071
17-46	-70059.668	48545.989	13.343	347° 25' 00"	18.144	880818.424416
17-16	-70046.645	48543.082	20.688	257° 27' 14"	8.529	414023.946378
17-35	-70051.139	48522.888	7.752	167° 29' 02"	-12.062	-585283.075056
17-34	-70058.707	48524.568	10.838	167° 27' 23"	-18.148	-880623.860064
					倍 面 積	769.572757
					面 積	384.78 m <sup>2</sup>

## 座標法面積計算書

地番名	19-6					
点名	X	Y	距離	方向角	$X_{n+1} - X_{n-1}$	$Y_n \cdot (X_{n+1} - X_{n-1})$
17-31	-70081.516	48533.773	16.683	77° 19' 51"	2.496	121140.297408
17-14	-70077.857	48550.050	8.622	347° 25' 38"	12.075	586241.853750
17-45	-70069.441	48548.173	4.767	347° 22' 29"	13.068	634427.524764
17-15	-70064.789	48547.131	16.657	257° 26' 53"	1.032	50100.639192
17-32	-70068.409	48530.872	12.230	167° 33' 49"	-15.564	-755334.491808
17-40	-70080.353	48533.506	1.193	167° 04' 13"	-13.107	-636128.663142
倍 面 積						447.160164
面 積						223.58 m <sup>2</sup>

## 座標法面積計算書

地番名	19-7					
点名	X	Y	距離	方向角	$X_{n+1} - X_{n-1}$	$Y_n \cdot (X_{n+1} - X_{n-1})$
17-52	-70112.327	48540.633	16.681	77° 27' 09"	-4.542	-220471.555086
17-51	-70108.703	48556.916	31.600	347° 27' 04"	34.470	1673756.894520
17-14	-70077.857	48550.050	16.683	257° 19' 51"	27.187	1319930.209350
17-31	-70081.516	48533.773	11.004	167° 26' 06"	-14.400	-698886.331200
17-30	-70092.257	48536.167	12.194	167° 27' 49"	-22.645	-1099101.501715
17-29	-70104.161	48538.814	8.366	167° 26' 32"	-20.070	-974173.996980
					倍面積	1053.718889
					面積	526.85 m <sup>2</sup>



## 座標法面積計算書

地番名	19-8					
点名	X	Y	距離	方向角	$X_{n+1} - X_{n-1}$	$Y_n \cdot (X_{n+1} - X_{n-1})$
17-13	-70127.999	48544.124	14.549	77° 29' 32"	-8.756	-425052.349744
17-4	-70124.848	48558.328	3.003	32° 19' 30"	5.689	276248.327992
17-6	-70122.310	48559.934	1.106	347° 56' 55"	3.620	175786.961080
17-44	-70121.228	48559.703	12.831	347° 27' 19"	13.607	660751.878721
17-51	-70108.703	48556.916	16.681	257° 27' 09"	8.901	432205.109316
17-52	-70112.327	48540.633	3.857	167° 24' 30"	-7.389	-358666.737237
17-28	-70116.092	48541.474	12.198	167° 27' 10"	-15.672	-760741.980528
					倍面積	531.209600
					面積	265.60 m <sup>2</sup>

## 座標法面積計算書

地番名	19-9					
点名	X	Y	距離	方向角	$X_{n+1} - X_{n-1}$	$Y_n \cdot (X_{n+1} - X_{n-1})$
17-1	-70130.145	48524.802	3.000	122° 18' 47"	-11.460	-556094.230920
17-3	-70131.749	48527.338	5.647	77° 20' 49"	-0.367	-17809.533046
17-43	-70130.512	48532.848	11.552	77° 26' 10"	3.750	181998.180000
17-13	-70127.999	48544.124	12.198	347° 27' 10"	14.420	700006.268080
17-28	-70116.092	48541.474	19.319	257° 27' 10"	7.710	374254.764540
17-27	-70120.289	48522.616	10.095	167° 29' 41"	-14.053	-681888.322648
					倍面積	467.126006
					面積	233.56 m <sup>2</sup>

## 座標法面積計算書

地番名	19-10					
点名	X	Y	距離	方向角	$X_{n+1} - X_{n-1}$	$Y_n \cdot (X_{n+1} - X_{n-1})$
17-27	-70120.289	48522.616	19.319	77° 27' 10"	-7.726	-374885.731216
17-28	-70116.092	48541.474	3.857	347° 24' 30"	7.962	386487.215988
17-52	-70112.327	48540.633	8.366	347° 26' 32"	11.931	579138.292323
17-29	-70104.161	48538.814	19.317	257° 25' 38"	3.961	192262.242254
17-26	-70108.366	48519.960	12.215	167° 26' 30"	-16.128	-782529.914880
					倍 面積	472.104469
					面積	236.05 m <sup>2</sup>

## 座標法面積計算書

地番名	19-11					
点名	X	Y	距離	方向角	$X_{n+1} - X_{n-1}$	$Y_n \cdot (X_{n+1} - X_{n-1})$
17-26	-70108.366	48519.960	19.317	77° 25' 38"	-7.713	-374234.451480
17-29	-70104.161	48538.814	12.194	347° 27' 49"	16.109	781911.754726
17-30	-70092.257	48536.167	19.323	257° 28' 27"	7.713	374359.456071
17-25	-70096.448	48517.303	12.210	167° 25' 55"	-16.109	-781565.234027
					倍 面積	471.525290
					面積	235.76 m <sup>2</sup>

## 座標法面積計算書

地番名	19-12					
点名	X	Y	距離	方向角	$X_{n+1} - X_{n-1}$	$Y_n \cdot (X_{n+1} - X_{n-1})$
17-25	-70096.448	48517.303	19.323	77° 28' 27"	-7.729	-374990.234887
17-30	-70092.257	48536.167	11.004	347° 26' 06"	14.932	724742.045644
17-31	-70081.516	48533.773	1.193	347° 04' 13"	11.904	577746.033792
17-40	-70080.353	48533.506	19.308	257° 30' 46"	-3.012	-146182.920072
17-39	-70084.528	48514.654	12.210	167° 28' 14"	-16.095	-780843.356130
					倍 面積	471.568347
					面積	235.78 m <sup>2</sup>

## 座標法面積計算書

地番名	19-13					
点名	X	Y	距離	方向角	$X_{n+1} - X_{n-1}$	$Y_n \cdot (X_{n+1} - X_{n-1})$
17-39	-70084.528	48514.654	19.308	77° 30' 46"	-7.757	-376328.171078
17-40	-70080.353	48533.506	12.230	347° 33' 49"	16.119	782311.583214
17-32	-70068.409	48530.872	4.046	257° 28' 05"	11.066	537042.629552
17-33	-70069.287	48526.922	15.287	257° 29' 57"	-4.187	-203182.222414
17-24	-70072.596	48511.997	12.224	167° 26' 47"	-15.241	-739371.346277
					倍 面積	472.472997
					面積	236.23 m <sup>2</sup>

## 座標法面積計算書

地番名	19-14					
点名	X	Y	距離	方向角	$X_{n+1} - X_{n-1}$	$Y_n \cdot (X_{n+1} - X_{n-1})$
17-24	-70072.596	48511.997	15.287	77° 29' 57"	-7.266	-352488.170202
17-33	-70069.287	48526.922	10.838	347° 27' 23"	13.889	673990.419658
17-34	-70058.707	48524.568	15.284	257° 28' 40"	7.266	352579.511088
17-23	-70062.021	48509.647	10.832	167° 28' 16"	-13.889	-673750.487183
					倍 面積	331.273361
					面積	165.63 m <sup>2</sup>

## 座標法面積計算書

地番名	19-15					
点名	X	Y	距離	方向角	$X_{n+1} - X_{n-1}$	$Y_n \cdot (X_{n+1} - X_{n-1})$
17-23	-70062.021	48509.647	15.284	77° 28' 40"	1.063	51565.754761
17-34	-70058.707	48524.568	7.752	347° 29' 02"	10.882	528044.348976
17-35	-70051.139	48522.888	3.069	347° 28' 02"	10.564	512595.788832
17-36	-70048.143	48522.222	15.295	257° 27' 08"	-0.327	-15866.766594
17-22	-70051.466	48507.292	8.508	167° 24' 51"	-11.627	-563994.284084
17-50	-70059.770	48509.146	2.306	167° 27' 08"	-10.555	-512014.036030
倍面積						330.805861
面積						165.40 m <sup>2</sup>



## 座標法面積計算書

地番名	19-16					
点名	X	Y	距離	方向角	$X_{n+1} - X_{n-1}$	$Y_n \cdot (X_{n+1} - X_{n-1})$
17-22	-70051.466	48507.292	15.295	77° 27' 08"	-2.053	-99585.470476
17-36	-70048.143	48522.222	10.784	347° 26' 49"	13.850	672032.774700
17-42	-70037.616	48519.878	15.288	257° 26' 47"	7.204	349537.201112
17-41	-70040.939	48504.955	5.275	167° 30' 36"	-8.474	-411030.988670
17-49	-70046.090	48506.096	5.507	167° 27' 28"	-10.527	-510623.672592
					倍 面積	329.844074
					面積	164.92 m <sup>2</sup>

## 座標法面積計算書

地番名	19-17					
点名	X	Y	距離	方向角	$X_{n+1} - X_{n-1}$	$Y_n \cdot (X_{n+1} - X_{n-1})$
17-21	-70033.812	48503.375	4.865	29° 33' 28"	2.824	136973.531000
17-20	-70029.580	48505.775	1.180	257° 16' 54"	3.972	192664.938300
17-10	-70029.840	48504.623	3.000	211° 18' 04"	-2.824	-136977.055352
17-12	-70032.404	48503.064	1.441	167° 32' 40"	-3.972	-192654.170208
					倍 面積	7.243740
					面積	3.62 m <sup>2</sup>