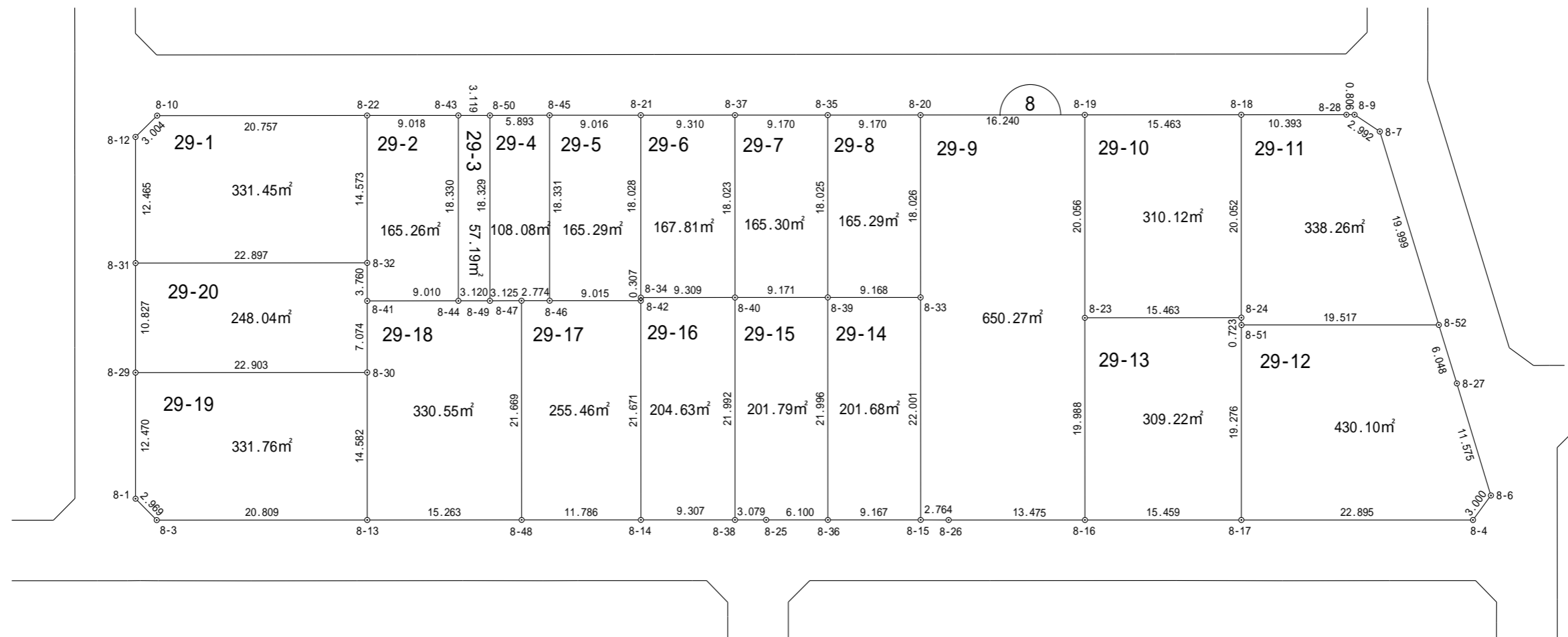
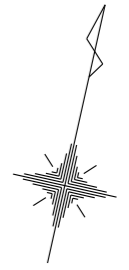


# 一宮町東浪見土地区画整理事業 画地確定図

長生郡一宮町東野



縮尺 1:500

## 座標法面積計算書

地番名	29-1					
点名	X	Y	距離	方向角	$X_{n+1} - X_{n-1}$	$Y_n \cdot (X_{n+1} - X_{n-1})$
8-31	-70311.874	48434.411	22.897	77° 23' 59"	-7.172	-347371.595692
8-32	-70306.879	48456.757	14.573	347° 25' 29"	19.219	931290.412783
8-22	-70292.655	48453.584	20.757	257° 24' 31"	9.699	469951.311216
8-10	-70297.180	48433.326	3.004	212° 45' 33"	-7.052	-341551.814952
8-12	-70299.707	48431.700	12.465	167° 26' 20"	-14.694	-711655.399800
					倍 面積	662.913555
					面積	331.45 m <sup>2</sup>

## 座標法面積計算書

地番名	29-2					
点名	X	Y	距離	方向角	$X_{n+1} - X_{n-1}$	$Y_n \cdot (X_{n+1} - X_{n-1})$
8-22	-70292.655	48453.584	14.573	167° 25' 29"	-16.190	-784463.524960
8-32	-70306.879	48456.757	3.760	167° 24' 18"	-17.894	-867085.209758
8-41	-70310.549	48457.577	9.010	77° 23' 03"	-1.702	-82474.796054
8-44	-70308.581	48466.370	18.330	347° 26' 48"	19.860	962542.108200
8-43	-70290.689	48462.386	9.018	257° 24' 33"	15.926	771811.959436
					倍 面積	330.536864
					面積	165.26 m <sup>2</sup>

## 座標法面積計算書

地番名	29-3					
点名	X	Y	距離	方向角	$X_{n+1} - X_{n-1}$	$Y_n \cdot (X_{n+1} - X_{n-1})$
8-43	-70290.689	48462.386	18.330	167° 26' 48"	-18.571	-899994.970406
8-44	-70308.581	48466.370	3.120	77° 24' 56"	-17.212	-834203.160440
8-49	-70307.901	48469.416	18.329	347° 26' 35"	18.571	900125.524536
8-50	-70290.010	48465.431	3.119	257° 25' 46"	17.212	834186.998372
					倍 面積	114.392062
					面積	57.19 m <sup>2</sup>

## 座標法面積計算書

地番名	29-4					
点名	X	Y	距離	方向角	$X_{n+1} - X_{n-1}$	$Y_n \cdot (X_{n+1} - X_{n-1})$
8-50	-70290.010	48465.431	18.329	167° 26' 35"	-19.184	-929760.828304
8-49	-70307.901	48469.416	3.125	77° 18' 08"	-17.204	-833867.832864
8-47	-70307.214	48472.465	2.774	77° 24' 22"	1.292	62626.424780
8-46	-70306.609	48475.173	18.331	347° 25' 21"	18.497	896645.274981
8-45	-70288.717	48471.181	5.893	257° 19' 36"	16.599	804573.133419
					倍 面積	216.172012
					面積	108.08 m <sup>2</sup>

## 座標法面積計算書

地番名	29-5					
点名	X	Y	距離	方向角	$X_{n+1} - X_{n-1}$	$Y_n \cdot (X_{n+1} - X_{n-1})$
8-45	-70288.717	48471.181	18.331	167° 25' 21"	-19.857	-962492.241117
8-46	-70306.609	48475.173	9.015	77° 26' 15"	-15.931	-772257.981063
8-42	-70304.648	48483.973	0.307	347° 13' 44"	2.261	109622.262953
8-34	-70304.348	48483.905	18.028	347° 25' 42"	17.896	867667.963880
8-21	-70286.752	48479.981	9.016	257° 24' 45"	15.631	757790.583011
					倍 面積	330.587664
					面積	165.29 m <sup>2</sup>

## 座標法面積計算書

地番名	29-6					
点名	X	Y	距離	方向角	$X_{n+1} - X_{n-1}$	$Y_n \cdot (X_{n+1} - X_{n-1})$
8-21	-70286.752	48479.981	18.028	167° 25' 42"	-19.627	-951516.587087
8-34	-70304.348	48483.905	9.309	77° 22' 23"	-15.561	-754458.045705
8-40	-70302.313	48492.989	18.023	347° 25' 55"	19.627	951771.895103
8-37	-70284.721	48489.067	9.310	257° 23' 59"	15.561	754538.371587
					倍 面積	335.633898
					面積	167.81 m <sup>2</sup>

## 座標法面積計算書

地番名	29-7					
点名	X	Y	距離	方向角	$X_{n+1} - X_{n-1}$	$Y_n \cdot (X_{n+1} - X_{n-1})$
8-37	-70284.721	48489.067	18.023	167° 25' 55"	-19.592	-949997.800664
8-40	-70302.313	48492.989	9.171	77° 24' 39"	-15.593	-756151.177477
8-39	-70300.314	48501.940	18.025	347° 25' 46"	19.592	950250.008480
8-35	-70282.721	48498.017	9.170	257° 24' 12"	15.593	756229.579081
					倍 面積	330.609420
					面積	165.30 m <sup>2</sup>



## 座標法面積計算書

地番名	29-8					
点名	X	Y	距離	方向角	$X_{n+1} - X_{n-1}$	$Y_n \cdot (X_{n+1} - X_{n-1})$
8-35	-70282.721	48498.017	18.025	167° 25' 46"	-19.589	-950027.655013
8-39	-70300.314	48501.940	9.168	77° 26' 19"	-15.599	-756581.762060
8-33	-70298.320	48510.889	18.026	347° 26' 13"	19.589	950279.804621
8-20	-70280.725	48506.968	9.170	257° 25' 45"	15.599	756660.193832
					倍 面積	330.581380
					面積	165.29 m <sup>2</sup>

## 座標法面積計算書

地番名	29-9					
点名	X	Y	距離	方向角	$X_{n+1} - X_{n-1}$	$Y_n \cdot (X_{n+1} - X_{n-1})$
8-15	-70319.793	48515.682	2.764	77° 29' 13"	-20.874	-1012716.346068
8-26	-70319.194	48518.381	13.475	77° 27' 18"	3.526	171075.811406
8-16	-70316.267	48531.535	19.988	347° 25' 28"	22.436	1088853.519260
8-23	-70296.758	48527.183	20.056	347° 25' 38"	39.085	1896684.947555
8-19	-70277.182	48522.817	16.240	257° 23' 56"	16.033	777966.324961
8-20	-70280.725	48506.968	18.026	167° 26' 13"	-21.138	-1025340.289584
8-33	-70298.320	48510.889	22.001	167° 25' 02"	-39.068	-1895223.411452
倍 面 積						1300.556078
面 積						650.27 m <sup>2</sup>

## 座標法面積計算書

地番名	29-10					
点名	X	Y	距離	方向角	$X_{n+1} - X_{n-1}$	$Y_n \cdot (X_{n+1} - X_{n-1})$
8-23	-70296.758	48527.183	15.463	77° 23' 50"	-16.202	-786237.418966
8-24	-70293.384	48542.274	20.052	347° 25' 39"	22.946	1113851.019204
8-18	-70273.812	48537.909	15.463	257° 24' 45"	16.202	786411.201618
8-19	-70277.182	48522.817	20.056	167° 25' 38"	-22.946	-1113404.558882
					倍 面積	620.242974
					面積	310.12 m <sup>2</sup>

## 座標法面積計算書

地番名	29-11					
点名	X	Y	距離	方向角	$X_{n+1} - X_{n-1}$	$Y_n \cdot (X_{n+1} - X_{n-1})$
8-52	-70289.840	48561.489	19.999	330° 28' 03"	21.649	1051307.675361
8-7	-70272.439	48551.631	2.992	291° 03' 05"	18.476	897039.934356
8-9	-70271.364	48548.838	0.806	257° 10' 14"	0.896	43499.758848
8-28	-70271.543	48548.052	10.393	257° 23' 26"	-2.448	-118845.631296
8-18	-70273.812	48537.909	20.052	167° 25' 39"	-21.841	-1060116.470469
8-24	-70293.384	48542.274	0.723	166° 48' 34"	-20.276	-984243.147624
8-51	-70294.088	48542.439	19.517	77° 25' 45"	3.544	172034.403816
					倍 面 積	676.522992
					面 積	338.26 m <sup>2</sup>

## 座標法面積計算書

地番名	29-12					
点名	X	Y	距離	方向角	$X_{n+1} - X_{n-1}$	$Y_n \cdot (X_{n+1} - X_{n-1})$
8-17	-70312.905	48546.625	22.895	77° 26' 33"	-13.839	-671836.743375
8-4	-70307.927	48568.973	3.000	23° 32' 58"	7.729	375389.592317
8-6	-70305.176	48570.172	11.575	330° 32' 42"	12.830	623155.306760
8-27	-70295.097	48564.480	6.048	330° 21' 43"	15.336	744784.865280
8-52	-70289.840	48561.489	19.517	257° 25' 45"	1.009	48998.542401
8-51	-70294.088	48542.439	19.276	167° 27' 30"	-23.065	-1119631.355535
倍面積						860.207848
面積						430.10 m <sup>2</sup>

## 座標法面積計算書

地番名	29-13					
点名	X	Y	距離	方向角	$X_{n+1} - X_{n-1}$	$Y_n \cdot (X_{n+1} - X_{n-1})$
8-16	-70316.267	48531.535	15.459	77° 26' 23"	-16.147	-783638.695645
8-17	-70312.905	48546.625	19.276	347° 27' 30"	22.179	1076715.595875
8-51	-70294.088	48542.439	0.723	346° 48' 34"	19.521	947596.951719
8-24	-70293.384	48542.274	15.463	257° 23' 50"	-2.670	-129607.871580
8-23	-70296.758	48527.183	19.988	167° 25' 28"	-22.883	-1110447.528589
					倍 面積	618.451780
					面積	309.22 m <sup>2</sup>

## 座標法面積計算書

地番名	29-14					
点名	X	Y	距離	方向角	$X_{n+1} - X_{n-1}$	$Y_n \cdot (X_{n+1} - X_{n-1})$
8-39	-70300.314	48501.940	21.996	167° 24' 52"	-23.462	-1137952.516280
8-36	-70321.782	48506.733	9.167	77° 28' 09"	-19.479	-944862.652107
8-15	-70319.793	48515.682	22.001	347° 25' 02"	23.462	1138274.931084
8-33	-70298.320	48510.889	9.168	257° 26' 19"	19.479	944943.606831
					倍 面積	403.369528
					面積	201.68 m <sup>2</sup>

## 座標法面積計算書

地番名	29-15					
点名	X	Y	距離	方向角	$X_{n+1} - X_{n-1}$	$Y_n \cdot (X_{n+1} - X_{n-1})$
8-40	-70302.313	48492.989	21.992	167° 26' 10"	-23.465	-1137887.986885
8-38	-70323.779	48497.773	3.079	77° 21' 29"	-20.792	-1008365.696216
8-25	-70323.105	48500.778	6.100	77° 28' 27"	1.997	96856.053666
8-36	-70321.782	48506.733	21.996	347° 24' 52"	22.791	1105516.951803
8-39	-70300.314	48501.940	9.171	257° 24' 39"	19.469	944284.269860
					倍 面積	403.592228
					面積	201.79 m <sup>2</sup>



## 座標法面積計算書

地番名	29-16					
点名	X	Y	距離	方向角	$X_{n+1} - X_{n-1}$	$Y_n \cdot (X_{n+1} - X_{n-1})$
8-34	-70304.348	48483.905	0.307	167° 13' 44"	-2.335	-113209.918175
8-42	-70304.648	48483.973	21.671	167° 26' 01"	-21.452	-1040078.188796
8-14	-70325.800	48488.688	9.307	77° 27' 31"	-19.131	-927637.090128
8-38	-70323.779	48497.773	21.992	347° 26' 10"	23.487	1139067.194451
8-40	-70302.313	48492.989	9.309	257° 22' 23"	19.431	942267.269259
					倍 面積	409.266611
					面積	204.63 m <sup>2</sup>

## 座標法面積計算書

地番名	29-17					
点名	X	Y	距離	方向角	$X_{n+1} - X_{n-1}$	$Y_n \cdot (X_{n+1} - X_{n-1})$
8-47	-70307.214	48472.465	21.669	167° 25' 18"	-21.754	-1054470.003610
8-48	-70328.363	48477.184	11.786	77° 26' 24"	-18.586	-900996.941824
8-14	-70325.800	48488.688	21.671	347° 26' 01"	23.715	1149909.235920
8-42	-70304.648	48483.973	9.015	257° 26' 15"	19.191	930455.925843
8-46	-70306.609	48475.173	2.774	257° 24' 22"	-2.566	-124387.293918
					倍 面積	510.922411
					面積	255.46 m <sup>2</sup>

## 座標法面積計算書

地番名	29-18					
点名	X	Y	距離	方向角	$X_{n+1} - X_{n-1}$	$Y_n \cdot (X_{n+1} - X_{n-1})$
8-41	-70310.549	48457.577	7.074	167° 26' 07"	-8.873	-429964.080721
8-30	-70317.454	48459.116	14.582	167° 26' 27"	-21.139	-1024377.253124
8-13	-70331.688	48462.287	15.263	77° 25' 04"	-10.909	-528675.088883
8-48	-70328.363	48477.184	21.669	347° 25' 18"	24.474	1186430.601216
8-47	-70307.214	48472.465	3.125	257° 18' 08"	20.462	991843.578830
8-49	-70307.901	48469.416	3.120	257° 24' 56"	-1.367	-66257.691672
8-44	-70308.581	48466.370	9.010	257° 23' 03"	-2.648	-128338.947760
					倍 面 積	661.117886
					面 積	330.55 m <sup>2</sup>

## 座標法面積計算書

地番名	29-19					
点名	X	Y	距離	方向角	$X_{n+1} - X_{n-1}$	$Y_n \cdot (X_{n+1} - X_{n-1})$
8-1	-70334.614	48439.480	2.969	122° 46' 50"	-13.779	-667447.594920
8-3	-70336.222	48441.977	20.809	77° 24' 56"	2.926	141741.224702
8-13	-70331.688	48462.287	14.582	347° 26' 27"	18.768	909540.202416
8-30	-70317.454	48459.116	22.903	257° 25' 08"	9.245	448004.527420
8-29	-70322.443	48436.762	12.470	167° 24' 41"	-17.160	-831174.835920
					倍 面積	663.523698
					面積	331.76 m <sup>2</sup>

## 座標法面積計算書

地番名	29-20					
点名	X	Y	距離	方向角	$X_{n+1} - X_{n-1}$	$Y_n \cdot (X_{n+1} - X_{n-1})$
8-29	-70322.443	48436.762	22.903	77° 25' 08"	-5.580	-270277.131960
8-30	-70317.454	48459.116	7.074	347° 26' 07"	11.894	576372.725704
8-41	-70310.549	48457.577	3.760	347° 24' 18"	10.575	512438.876775
8-32	-70306.879	48456.757	22.897	257° 23' 59"	-1.325	-64205.203025
8-31	-70311.874	48434.411	10.827	167° 27' 33"	-15.564	-753833.172804
					倍 面積	496.094690
					面積	248.04 m <sup>2</sup>