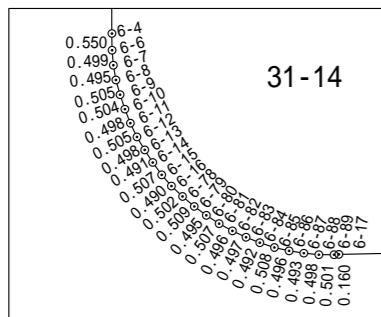
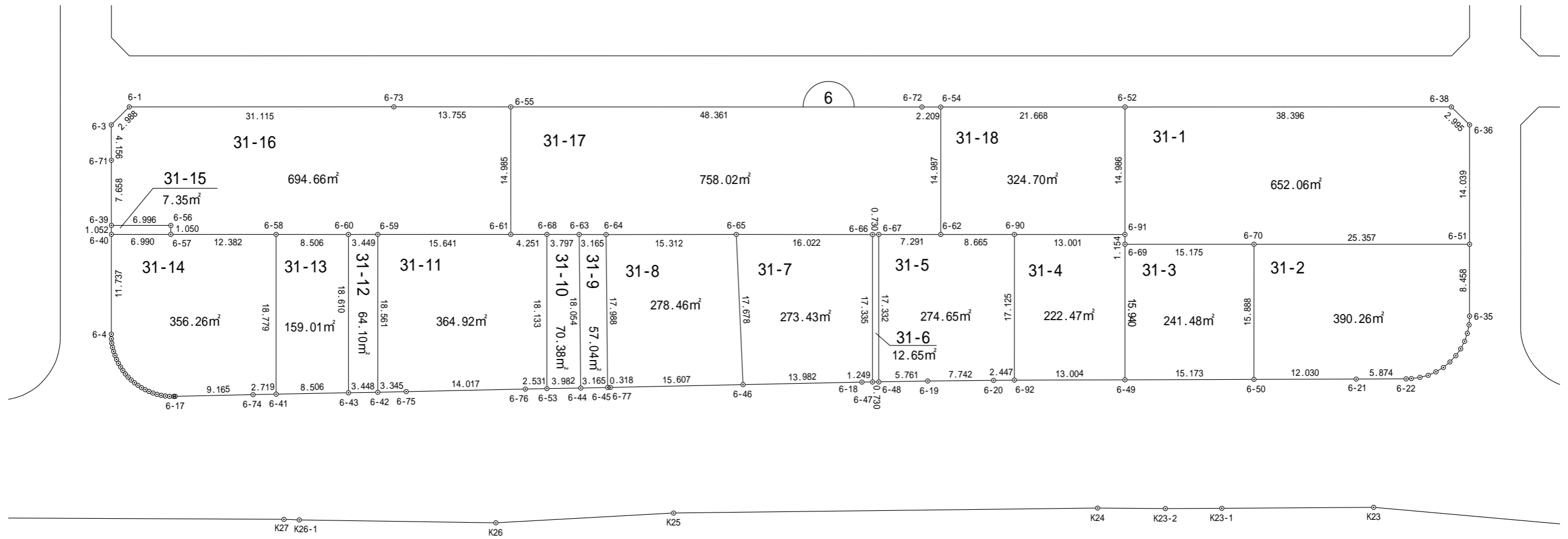
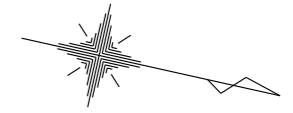
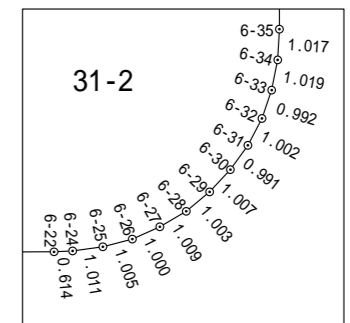


一宮町東浪見土地区画整理事業 画地確定図

長生郡一宮町東野



拡大図 1:250



拡大図 1:250

縮尺 1:500

座標法面積計算書

地番名	31-1					
点名	X	Y	距離	方向角	$X_{n+1} - X_{n-1}$	$Y_n \cdot (X_{n+1} - X_{n-1})$
6-52	-70168.507	48576.370	14.986	77° 28' 01"	-34.226	-1662574.839620
6-91	-70165.255	48590.999	1.154	77° 29' 34"	3.502	170165.678498
6-69	-70165.005	48592.126	15.175	347° 27' 20"	15.063	731943.193938
6-70	-70150.192	48588.830	25.357	347° 26' 19"	39.564	1922368.470120
6-51	-70125.441	48583.315	14.039	257° 27' 24"	21.702	1054355.102130
6-36	-70128.490	48569.611	2.995	212° 03' 22"	-5.588	-271406.986268
6-38	-70131.029	48568.021	38.396	167° 26' 28"	-40.017	-1943546.496357
倍 面 積						1304.122441
面 積						652.06 m ²

座標法面積計算書

地番名	31-2					
点名	X	Y	距離	方向角	$X_{n+1} - X_{n-1}$	$Y_n \cdot (X_{n+1} - X_{n-1})$
6-70	-70150.192	48588.830	15.888	77° 27' 06"	-21.299	-1034893.490170
6-50	-70146.740	48604.339	12.030	347° 14' 25"	15.185	738056.887715
6-21	-70135.007	48601.682	5.874	347° 13' 29"	17.462	848682.571084
6-22	-70129.278	48600.383	0.614	344° 36' 21"	6.321	307203.020943
6-24	-70128.686	48600.220	1.011	339° 34' 36"	1.540	74844.338800
6-25	-70127.738	48599.867	1.005	332° 53' 59"	1.843	89569.554881
6-26	-70126.843	48599.409	1.000	323° 12' 37"	1.696	82424.597664
6-27	-70126.042	48598.810	1.009	317° 10' 07"	1.541	74890.766210
6-28	-70125.302	48598.124	1.003	307° 40' 11"	1.353	65753.261772
6-29	-70124.689	48597.330	1.007	300° 32' 05"	1.125	54671.996250
6-30	-70124.177	48596.462	0.991	293° 09' 11"	0.902	43834.008724
6-31	-70123.787	48595.550	1.002	285° 05' 23"	0.651	31635.703050
6-32	-70123.526	48594.582	0.992	276° 11' 14"	0.368	17882.806176
6-33	-70123.419	48593.595	1.019	268° 45' 47"	0.085	4130.455575
6-34	-70123.441	48592.576	1.017	260° 46' 42"	-0.185	-8989.626560
6-35	-70123.604	48591.572	8.458	257° 27' 26"	-2.000	-97183.144000
6-51	-70125.441	48583.315	25.357	167° 26' 19"	-26.588	-1291733.179220
					倍 面積	780.528894
					面積	390.26 m ²

座標法面積計算書

地番名	31-3					
点名	X	Y	距離	方向角	$X_{n+1} - X_{n-1}$	$Y_n \cdot (X_{n+1} - X_{n-1})$
6-69	-70165.005	48592.126	15.940	77° 26' 42"	-11.348	-551423.445848
6-49	-70161.540	48607.685	15.173	347° 15' 38"	18.265	887819.366525
6-50	-70146.740	48604.339	15.888	257° 27' 06"	11.348	551562.038972
6-70	-70150.192	48588.830	15.175	167° 27' 20"	-18.265	-887474.979950
					倍 面積	482.979699
					面積	241.48 m ²

座標法面積計算書

地番名	31-4					
点名	X	Y	距離	方向角	$X_{n+1} - X_{n-1}$	$Y_n \cdot (X_{n+1} - X_{n-1})$
6-90	-70177.945	48593.826	17.125	77° 27' 40"	-8.972	-435983.806872
6-92	-70174.227	48610.543	13.004	347° 18' 18"	16.405	797455.957915
6-49	-70161.540	48607.685	15.940	257° 26' 42"	9.222	448260.071070
6-69	-70165.005	48592.126	1.154	257° 29' 34"	-3.715	-180519.748090
6-91	-70165.255	48590.999	13.001	167° 26' 28"	-12.940	-628767.527060
					倍 面積	444.946963
					面積	222.47 m ²

座標法面積計算書

地番名	31-5					
点名	X	Y	距離	方向角	$X_{n+1} - X_{n-1}$	$Y_n \cdot (X_{n+1} - X_{n-1})$
6-67	-70193.520	48597.294	17.332	77° 26' 27"	-3.349	-162752.337606
6-48	-70189.751	48614.212	5.761	346° 26' 20"	9.370	455515.166440
6-19	-70184.150	48612.861	7.742	346° 54' 22"	13.142	638870.219262
6-20	-70176.609	48611.107	2.447	346° 40' 45"	9.923	482368.014761
6-92	-70174.227	48610.543	17.125	257° 27' 40"	-1.336	-64943.685448
6-90	-70177.945	48593.826	8.665	167° 24' 55"	-12.175	-591629.831550
6-62	-70186.402	48595.714	7.291	167° 29' 05"	-15.575	-756878.245550
					倍 面 積	549.300309
					面 積	274.65 m ²

座標法面積計算書

地番名	31-6					
点名	X	Y	距離	方向角	$X_{n+1} - X_{n-1}$	$Y_n \cdot (X_{n+1} - X_{n-1})$
6-66	-70194.231	48597.461	17.335	77° 26' 23"	3.059	148659.633199
6-47	-70190.461	48614.382	0.730	346° 32' 05"	4.480	217792.431360
6-48	-70189.751	48614.212	17.332	257° 26' 27"	-3.059	-148710.874508
6-67	-70193.520	48597.294	0.730	166° 46' 55"	-4.480	-217715.877120
倍 面積						25.312931
面積						12.65 m ²

座標法面積計算書

地番名	31-7					
点名	X	Y	距離	方向角	$X_{n+1} - X_{n-1}$	$Y_n \cdot (X_{n+1} - X_{n-1})$
6-65	-70209.873	48600.930	17.678	74° 52' 05"	-11.027	-535922.455110
6-46	-70205.258	48617.996	13.982	346° 15' 07"	18.197	884701.673212
6-18	-70191.676	48614.673	1.249	346° 31' 52"	14.797	719351.316381
6-47	-70190.461	48614.382	17.335	257° 26' 23"	-2.555	-124209.746010
6-66	-70194.231	48597.461	16.022	167° 29' 44"	-19.412	-943373.912932
					倍 面積	546.875541
					面積	273.43 m ²

座標法面積計算書

地番名	31-8					
点名	X	Y	距離	方向角	$X_{n+1} - X_{n-1}$	$Y_n \cdot (X_{n+1} - X_{n-1})$
6-64	-70224.816	48604.272	17.988	76° 51' 27"	-10.853	-527502.164016
6-45	-70220.726	48621.789	0.318	346° 34' 27"	4.400	213935.871600
6-77	-70220.416	48621.715	15.607	346° 12' 53"	15.468	752080.687620
6-46	-70205.258	48617.996	17.678	254° 52' 05"	10.543	512579.531828
6-65	-70209.873	48600.930	15.312	167° 23' 36"	-19.558	-950536.988940
					倍 面積	556.938092
					面積	278.46 m ²

座標法面積計算書

地番名	31-9					
点名	X	Y	距離	方向角	$X_{n+1} - X_{n-1}$	$Y_n \cdot (X_{n+1} - X_{n-1})$
6-63	-70227.908	48604.951	18.054	76° 51' 29"	1.013	49236.815363
6-44	-70223.803	48622.533	3.165	346° 24' 26"	7.182	349207.032006
6-45	-70220.726	48621.789	17.988	256° 51' 27"	-1.013	-49253.872257
6-64	-70224.816	48604.272	3.165	167° 36' 52"	-7.182	-349075.881504
倍 面積						114.093608
面積						57.04 m ²

座標法面積計算書

地番名	31-10					
点名	X	Y	距離	方向角	$X_{n+1} - X_{n-1}$	$Y_n \cdot (X_{n+1} - X_{n-1})$
6-68	-70231.617	48605.768	18.133	77° 26' 29"	0.234	11373.749712
6-53	-70227.674	48623.468	3.982	346° 25' 15"	7.814	379943.778952
6-44	-70223.803	48622.533	18.054	256° 51' 29"	-0.234	-11377.672722
6-63	-70227.908	48604.951	3.797	167° 34' 39"	-7.814	-379799.087114
倍 面積						140.768828
面積						70.38 m ²

座標法面積計算書

地番名	31-11					
点名	X	Y	距離	方向角	$X_{n+1} - X_{n-1}$	$Y_n \cdot (X_{n+1} - X_{n-1})$
6-59	-70251.033	48610.097	18.561	77° 25' 55"	-11.228	-545794.169116
6-42	-70246.994	48628.214	3.345	346° 09' 47"	7.287	354353.795418
6-75	-70243.746	48627.414	14.017	346° 12' 10"	16.861	819906.827454
6-76	-70230.133	48624.071	2.531	346° 13' 18"	16.072	781486.069112
6-53	-70227.674	48623.468	18.133	257° 26' 29"	-1.484	-72157.226512
6-68	-70231.617	48605.768	4.251	167° 25' 07"	-8.092	-393317.874656
6-61	-70235.766	48606.694	15.641	167° 26' 03"	-19.416	-943747.570704
					倍面積	729.850996
					面積	364.92 m ²

座標法面積計算書

地番名	31-12					
点名	X	Y	距離	方向角	$X_{n+1} - X_{n-1}$	$Y_n \cdot (X_{n+1} - X_{n-1})$
6-60	-70254.398	48610.857	18.610	77° 25' 39"	0.686	33347.047902
6-43	-70250.347	48629.021	3.448	346° 28' 03"	7.404	360049.271484
6-42	-70246.994	48628.214	18.561	257° 25' 55"	-0.686	-33358.954804
6-59	-70251.033	48610.097	3.449	167° 16' 23"	-7.404	-359909.158188
					倍 面積	128.206394
					面積	64.10 m ²

座標法面積計算書

地番名	31-13					
点名	X	Y	距離	方向角	$X_{n+1} - X_{n-1}$	$Y_n \cdot (X_{n+1} - X_{n-1})$
6-58	-70262.704	48612.695	18.779	77° 25' 15"	-4.216	-204951.122120
6-41	-70258.614	48631.024	8.506	346° 22' 49"	12.357	600933.563568
6-43	-70250.347	48629.021	18.610	257° 25' 39"	4.216	205019.952536
6-60	-70254.398	48610.857	8.506	167° 31' 20"	-12.357	-600684.359949
					倍 面積	318.034035
					面積	159.01 m ²

座標法面積計算書

地番名	31-14					
点名	X	Y	距離	方向角	$X_{n+1} - X_n$	$Y_n \cdot (X_{n+1} - X_n)$
6-40	-70281.616	48616.899	11.737	77° 28' 37"	-4.279	-208031.710821
6-4	-70279.071	48628.357	0.550	76° 40' 13"	2.672	129934.969904
6-6	-70278.944	48628.893	0.499	72° 30' 32"	0.277	13470.203361
6-7	-70278.794	48629.369	0.495	67° 34' 33"	0.339	16485.356091
6-8	-70278.605	48629.827	0.505	61° 39' 39"	0.429	20862.195783
6-9	-70278.365	48630.272	0.504	59° 22' 03"	0.497	24169.245184
6-10	-70278.108	48630.706	0.498	55° 47' 58"	0.537	26114.689122
6-11	-70277.828	48631.118	0.505	51° 54' 23"	0.592	28789.621856
6-12	-70277.516	48631.516	0.498	46° 42' 22"	0.654	31805.011464
6-13	-70277.174	48631.879	0.491	44° 55' 03"	0.690	33555.996510
6-14	-70276.826	48632.226	0.507	41° 29' 00"	0.728	35404.260528
6-15	-70276.446	48632.562	0.490	36° 17' 07"	0.775	37690.235550
6-16	-70276.051	48632.852	0.502	30° 44' 55"	0.827	40219.368604
6-78	-70275.619	48633.109	0.509	27° 52' 26"	0.882	42894.402138
6-79	-70275.169	48633.347	0.495	23° 33' 47"	0.904	43964.545688
6-80	-70274.715	48633.545	0.507	20° 45' 15"	0.929	45180.563305
6-81	-70274.240	48633.725	0.496	16° 01' 29"	0.952	46299.306200
6-82	-70273.763	48633.862	0.497	12° 18' 14"	0.963	46834.409106
6-83	-70273.277	48633.968	0.492	9° 07' 04"	0.972	47272.216896
6-84	-70272.791	48634.046	0.508	5° 38' 36"	0.992	48244.973632
6-85	-70272.285	48634.096	0.496	0° 20' 48"	1.002	48731.364192
6-86	-70271.789	48634.099	0.493	356° 24' 07"	0.989	48099.123911
6-87	-70271.296	48634.068	0.498	353° 05' 20"	0.988	48050.459184
6-88	-70270.801	48634.008	0.501	347° 34' 13"	0.985	47904.497880
6-89	-70270.311	48633.900	0.160	343° 42' 40"	0.644	31320.231600
6-17	-70270.157	48633.855	9.165	346° 14' 01"	9.056	440428.190880
6-74	-70261.255	48631.674	2.719	346° 10' 24"	11.543	561355.412982
6-41	-70258.614	48631.024	18.779	257° 25' 15"	-1.449	-70466.353776
6-58	-70262.704	48612.695	12.382	167° 28' 20"	-16.178	-786456.179710
6-57	-70274.792	48615.381	6.990	167° 27' 31"	-18.912	-919414.085472
					倍 面 積	712.521772
					面 積	356.26 m ²

座標法面積計算書

地番名	31-15					
点名	X	Y	距離	方向角	$X_{n+1} - X_{n-1}$	$Y_n \cdot (X_{n+1} - X_{n-1})$
6-39	-70281.847	48615.872	1.052	77° 19' 25"	-6.599	-320816.139328
6-40	-70281.616	48616.899	6.990	347° 27' 31"	7.055	342992.222445
6-57	-70274.792	48615.381	1.050	257° 37' 51"	6.599	320812.899219
6-56	-70275.017	48614.355	6.996	167° 28' 39"	-7.055	-342974.274525
倍 面積						14.707811
面積						7.35 m ²

座標法面積計算書

地番名	31-16					
点名	X	Y	距離	方向角	$X_{n+1} - X_{n-1}$	$Y_n \cdot (X_{n+1} - X_{n-1})$
6-1	-70282.819	48601.819	2.988	122° 27' 23"	-31.974	-1553994.560706
6-3	-70284.423	48604.341	4.156	77° 18' 40"	-0.691	-33585.599631
6-71	-70283.510	48608.396	7.658	77° 27' 32"	2.576	125215.228096
6-39	-70281.847	48615.872	6.996	347° 28' 39"	8.493	412894.600896
6-56	-70275.017	48614.355	1.050	77° 37' 51"	7.055	342974.274525
6-57	-70274.792	48615.381	12.382	347° 28' 20"	12.313	598601.186253
6-58	-70262.704	48612.695	8.506	347° 31' 20"	20.394	991407.301830
6-60	-70254.398	48610.857	3.449	347° 16' 23"	11.671	567337.312047
6-59	-70251.033	48610.097	15.641	347° 26' 03"	18.632	905703.327304
6-61	-70235.766	48606.694	14.985	257° 27' 18"	12.012	583863.608328
6-55	-70239.021	48592.066	13.755	167° 28' 46"	-16.683	-810661.437078
6-73	-70252.449	48595.048	31.115	167° 25' 53"	-43.798	-2128365.912304
					倍面積	1389.329560
					面積	694.66 m ²

座標法面積計算書

地番名	31-17					
点名	X	Y	距離	方向角	$X_{n+1} - X_{n-1}$	$Y_n \cdot (X_{n+1} - X_{n-1})$
6-55	-70239.021	48592.066	14.985	77° 27' 18"	-43.952	-2135718.484832
6-61	-70235.766	48606.694	4.251	347° 25' 07"	7.404	359883.962376
6-68	-70231.617	48605.768	3.797	347° 34' 39"	7.858	381944.124944
6-63	-70227.908	48604.951	3.165	347° 36' 52"	6.801	330562.271751
6-64	-70224.816	48604.272	15.312	347° 23' 36"	18.035	876578.045520
6-65	-70209.873	48600.930	16.022	347° 29' 44"	30.585	1486459.444050
6-66	-70194.231	48597.461	0.730	346° 46' 55"	16.353	794714.279733
6-67	-70193.520	48597.294	7.291	347° 29' 05"	7.829	380468.214726
6-62	-70186.402	48595.714	14.987	257° 27' 24"	3.863	187725.243182
6-54	-70189.657	48581.084	2.209	167° 30' 18"	-5.412	-262920.826608
6-72	-70191.814	48581.562	48.361	167° 27' 20"	-49.364	-2398180.226568
					倍面積	1516.048274
					面積	758.02 m ²

座標法面積計算書

地番名	31-18					
点名	X	Y	距離	方向角	$X_{n+1} - X_{n-1}$	$Y_n \cdot (X_{n+1} - X_{n-1})$
6-54	-70189.657	48581.084	14.987	77° 27' 24"	-17.895	-869358.498180
6-62	-70186.402	48595.714	8.665	347° 24' 55"	11.712	569153.002368
6-90	-70177.945	48593.826	13.001	347° 26' 28"	21.147	1027613.638422
6-91	-70165.255	48590.999	14.986	257° 28' 01"	9.438	458601.848562
6-52	-70168.507	48576.370	21.668	167° 26' 06"	-24.402	-1185360.580740
					倍 面積	649.410432
					面積	324.70 m ²