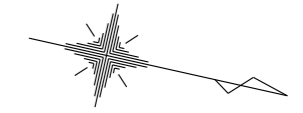
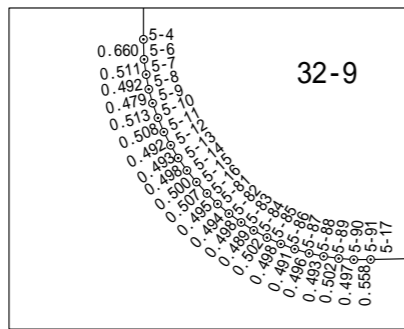
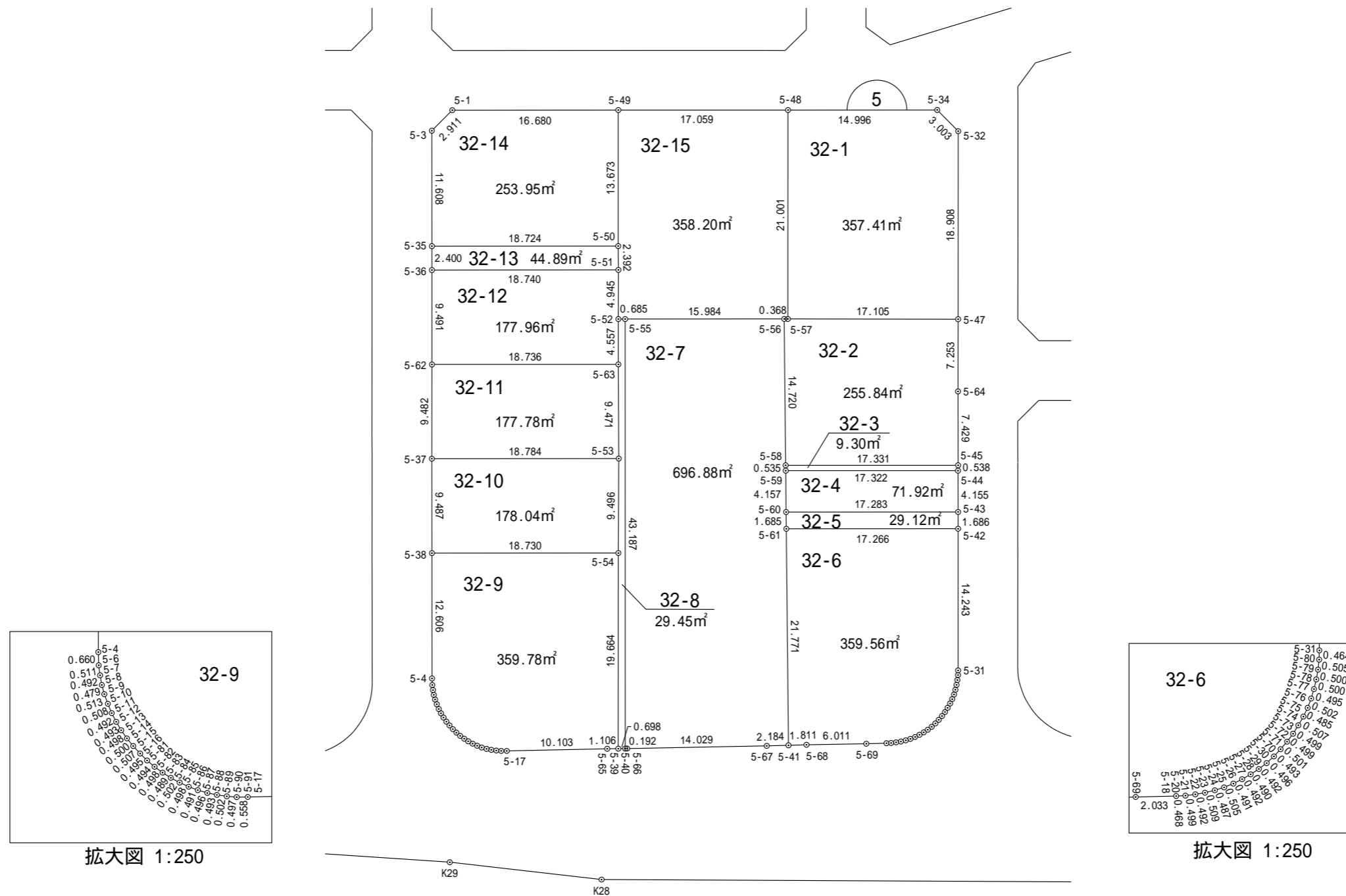


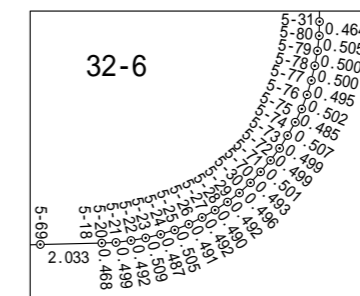
一宮町東浪見土地区画整理事業 画地確定図



長生郡一宮町東野



拡大図 1:250



拡大図 1:250

縮尺 1:500

座標法面積計算書

地番名	32-1					
点名	X	Y	距離	方向角	$X_{n+1} - X_{n-1}$	$Y_n \cdot (X_{n+1} - X_{n-1})$
5-48	-70313.765	48578.811	21.001	77° 28' 05"	-10.079	-489625.836069
5-57	-70309.208	48599.312	17.105	347° 32' 44"	21.260	1033221.373120
5-47	-70292.505	48595.623	18.908	257° 29' 33"	12.608	612693.614784
5-32	-70296.600	48577.163	3.003	212° 38' 33"	-6.624	-321775.127712
5-34	-70299.129	48575.543	14.996	167° 24' 47"	-17.165	-833799.195595
					倍 面積	714.828528
					面積	357.41 m ²

座標法面積計算書

地番名	32-2					
点名	X	Y	距離	方向角	$X_{n+1} - X_{n-1}$	$Y_n \cdot (X_{n+1} - X_{n-1})$
5-56	-70309.567	48599.393	14.720	76° 54' 04"	2.977	144680.392961
5-58	-70306.231	48613.730	17.331	347° 25' 23"	20.252	984525.259960
5-45	-70289.315	48609.956	7.429	257° 26' 16"	15.300	743732.326800
5-64	-70290.931	48602.704	7.253	257° 28' 04"	-3.190	-155042.625760
5-47	-70292.505	48595.623	17.105	167° 32' 44"	-18.277	-888182.201571
5-57	-70309.208	48599.312	0.368	167° 17' 08"	-17.062	-829201.461344
倍 面 積						511.691046
面 積						255.84 m ²

座標法面積計算書

地番名	32-3					
点名	X	Y	距離	方向角	$X_{n+1} - X_{n-1}$	$Y_n \cdot (X_{n+1} - X_{n-1})$
5-58	-70306.231	48613.730	0.535	76° 36' 45"	-16.792	-816321.754160
5-59	-70306.107	48614.251	17.322	347° 26' 01"	17.032	827997.923032
5-44	-70289.199	48610.482	0.538	257° 33' 49"	16.792	816267.213744
5-45	-70289.315	48609.956	17.331	167° 25' 23"	-17.032	-827924.770592
					倍 面積	18.612024
					面積	9.30 m ²

座標法面積計算書

地番名	32-4					
点名	X	Y	距離	方向角	$X_{n+1} - X_{n-1}$	$Y_n \cdot (X_{n+1} - X_{n-1})$
5-59	-70306.107	48614.251	4.157	76° 52' 35"	-15.964	-776077.902964
5-60	-70305.163	48618.300	17.283	347° 25' 41"	17.813	866037.777900
5-43	-70288.294	48614.538	4.155	257° 25' 19"	15.964	776082.484632
5-44	-70289.199	48610.482	17.322	167° 26' 01"	-17.813	-865898.515866
					倍 面積	143.843702
					面積	71.92 m ²

座標法面積計算書

地番名	32-5					
点名	X	Y	距離	方向角	$X_{n+1} - X_{n-1}$	$Y_n \cdot (X_{n+1} - X_{n-1})$
5-60	-70305.163	48618.300	1.685	76° 51' 46"	-16.486	-801521.293800
5-61	-70304.780	48619.941	17.266	347° 25' 58"	17.236	838013.303076
5-42	-70287.927	48616.184	1.686	257° 25' 50"	16.486	801486.409424
5-43	-70288.294	48614.538	17.283	167° 25' 41"	-17.236	-837920.176968
					倍 面積	58.241732
					面積	29.12 m ²

座標法面積計算書

地番名 点名	32-6					
	X	Y	距離	方向角	$X_{n+1} - X_{n-1}$	$Y_n \cdot (X_{n+1} - X_{n-1})$
5-61	-70304.780	48619.941	21.771	76° 52' 47"	-11.911	-579112.117251
5-41	-70299.838	48641.144	1.811	345° 50' 55"	6.699	325847.023656
5-68	-70298.081	48640.701	6.011	346° 25' 34"	7.601	369717.968301
5-69	-70292.237	48639.290	2.033	346° 01' 31"	7.817	380213.329930
5-18	-70290.264	48638.799	0.468	344° 46' 37"	2.425	117949.087575
5-20	-70289.812	48638.676	0.499	340° 19' 51"	0.922	44844.859272
5-21	-70289.342	48638.508	0.492	337° 26' 34"	0.925	44990.619900
5-22	-70288.887	48638.319	0.509	333° 56' 15"	0.913	44406.785247
5-23	-70288.429	48638.095	0.487	329° 42' 05"	0.879	42752.885505
5-24	-70288.008	48637.849	0.505	325° 23' 53"	0.837	40709.879613
5-25	-70287.592	48637.562	0.491	320° 42' 09"	0.796	38715.499352
5-26	-70287.212	48637.251	0.492	317° 47' 48"	0.745	36234.751995
5-27	-70286.847	48636.920	0.490	314° 20' 22"	0.708	34434.939360
5-28	-70286.504	48636.569	0.492	310° 03' 32"	0.660	32100.135540
5-29	-70286.187	48636.192	0.496	304° 54' 25"	0.601	29230.351392
5-30	-70285.903	48635.785	0.493	300° 43' 29"	0.536	26068.780760
5-70	-70285.651	48635.361	0.501	298° 12' 01"	0.489	23782.691529
5-71	-70285.414	48634.919	0.499	294° 21' 31"	0.443	21545.269117
5-72	-70285.208	48634.464	0.499	289° 31' 22"	0.373	18140.655072
5-73	-70285.041	48633.993	0.507	287° 04' 40"	0.316	15368.341788
5-74	-70284.892	48633.508	0.485	283° 41' 35"	0.264	12839.246112
5-75	-70284.777	48633.036	0.502	278° 07' 48"	0.186	9045.744696
5-76	-70284.706	48632.539	0.495	274° 03' 10"	0.106	5155.049134
5-77	-70284.671	48632.045	0.500	270° 34' 23"	0.040	1945.281800
5-78	-70284.666	48631.545	0.500	267° 28' 50"	-0.017	-826.736265
5-79	-70284.688	48631.045	0.505	264° 12' 38"	-0.073	-3550.066285
5-80	-70284.739	48630.542	0.464	258° 41' 24"	-0.142	-6905.536964
5-31	-70284.830	48630.087	14.243	257° 26' 31"	-3.188	-155032.717356
5-42	-70287.927	48616.184	17.266	167° 25' 58"	-19.950	-969892.870800
					倍面積	719.131725
					面積	359.56 m ²

座標法面積計算書

地番名	32-7					
点名	X	Y	距離	方向角	$X_{n+1} - X_{n-1}$	$Y_n \cdot (X_{n+1} - X_{n-1})$
5-55	-70325.167	48602.878	43.187	77° 26' 32"	-6.210	-301823.872380
5-40	-70315.777	48645.032	0.192	347° 41' 50"	9.578	465922.116496
5-66	-70315.589	48644.991	14.029	346° 19' 13"	13.820	672273.775620
5-67	-70301.957	48641.673	2.184	345° 58' 58"	15.751	766154.991423
5-41	-70299.838	48641.144	21.771	256° 52' 47"	-2.823	-137313.949512
5-61	-70304.780	48619.941	1.685	256° 51' 46"	-5.325	-258901.185825
5-60	-70305.163	48618.300	4.157	256° 52' 35"	-1.327	-64516.484100
5-59	-70306.107	48614.251	0.535	256° 36' 45"	-1.068	-51920.020068
5-58	-70306.231	48613.730	14.720	256° 54' 04"	-3.460	-168203.505800
5-56	-70309.567	48599.393	15.984	167° 24' 25"	-18.936	-920278.105848
					倍 面 積	1393.760006
					面 積	696.88 m ²

座標法面積計算書

地番名	32-8					
点名	X	Y	距離	方向角	$X_{n+1} - X_{n-1}$	$Y_n \cdot (X_{n+1} - X_{n-1})$
5-52	-70325.836	48603.028	4.557	77° 27' 17"	0.321	15601.571988
5-63	-70324.846	48607.477	9.471	77° 12' 08"	3.088	150099.888976
5-53	-70322.748	48616.713	9.496	77° 42' 24"	4.120	200300.857560
5-54	-70320.726	48625.992	19.664	77° 27' 54"	6.290	305857.489680
5-39	-70316.458	48645.188	0.698	347° 05' 51"	4.949	240745.035412
5-40	-70315.777	48645.032	43.187	257° 26' 32"	-8.709	-423649.583688
5-55	-70325.167	48602.878	0.685	167° 21' 45"	-10.059	-488896.349802
倍面積						58.910126
面積						29.45 m ²

座標法面積計算書

地番名 点名	32-9					
X	Y	距離	方向角	$X_{n+1} - X_{n-1}$	$Y_n \cdot (X_{n+1} - X_{n-1})$	
5-38	-70339.008	48630.068	12.606	77° 25' 24"	-15.537	-755565.366516
5-4	-70336.263	48642.372	0.660	75° 47' 43"	2.907	141403.375404
5-6	-70336.101	48643.012	0.511	69° 09' 20"	0.344	16733.196128
5-7	-70335.919	48643.490	0.492	67° 33' 01"	0.370	17998.091300
5-8	-70335.731	48643.945	0.479	62° 15' 29"	0.411	19992.661395
5-9	-70335.508	48644.369	0.513	57° 19' 55"	0.500	24322.184500
5-10	-70335.231	48644.801	0.508	54° 50' 31"	0.570	27727.536570
5-11	-70334.938	48645.217	0.492	50° 11' 40"	0.608	29576.291936
5-12	-70334.623	48645.595	0.493	46° 53' 24"	0.652	31716.927940
5-13	-70334.286	48645.955	0.498	42° 14' 06"	0.706	34344.044230
5-14	-70333.917	48646.290	0.500	38° 00' 56"	0.763	37117.119270
5-15	-70333.523	48646.598	0.507	34° 52' 51"	0.810	39403.744380
5-16	-70333.107	48646.888	0.495	32° 18' 42"	0.835	40620.151480
5-81	-70332.688	48647.153	0.494	27° 42' 17"	0.857	41690.610121
5-82	-70332.250	48647.383	0.498	23° 25' 31"	0.895	43539.407785
5-83	-70331.793	48647.581	0.489	19° 48' 12"	0.918	44658.479358
5-84	-70331.332	48647.747	0.502	15° 50' 08"	0.944	45923.473168
5-85	-70330.849	48647.884	0.498	12° 01' 50"	0.971	47237.095364
5-86	-70330.361	48647.988	0.491	8° 03' 51"	0.975	47431.788300
5-87	-70329.874	48648.057	0.496	3° 55' 45"	0.982	47772.391974
5-88	-70329.379	48648.091	0.493	358° 57' 15"	0.988	48064.313908
5-89	-70328.886	48648.082	0.502	355° 26' 07"	0.994	48356.193508
5-90	-70328.385	48648.042	0.497	351° 47' 18"	0.993	48307.505706
5-91	-70327.893	48647.971	0.558	347° 16' 56"	1.037	50447.945927
5-17	-70327.348	48647.848	10.103	346° 15' 09"	10.359	503943.057432
5-65	-70317.534	48645.447	1.106	346° 27' 58"	10.890	529748.917830
5-39	-70316.458	48645.188	19.664	257° 27' 54"	-3.192	-155275.440096
5-54	-70320.726	48625.992	18.730	167° 25' 53"	-22.550	-1096516.119600
					倍 面 積	719.578702
					面 積	359.78 m ²

座標法面積計算書

地番名	32-10					
点名	X	Y	距離	方向角	$X_{n+1} - X_n$	$Y_n \cdot (X_{n+1} - X_n)$
5-37	-70341.080	48620.810	9.487	77° 23' 05"	-16.260	-790574.370600
5-38	-70339.008	48630.068	18.730	347° 25' 53"	20.354	989816.404072
5-54	-70320.726	48625.992	9.496	257° 42' 24"	16.260	790658.629920
5-53	-70322.748	48616.713	18.784	167° 24' 07"	-20.354	-989544.576402
					倍 面積	356.086990
					面積	178.04 m ²

座標法面積計算書

地番名	32-11					
点名	X	Y	距離	方向角	$X_{n+1} - X_{n-1}$	$Y_n \cdot (X_{n+1} - X_{n-1})$
5-62	-70343.134	48611.553	9.482	77° 29' 22"	-16.234	-789159.951402
5-37	-70341.080	48620.810	18.784	347° 24' 07"	20.386	991183.832660
5-53	-70322.748	48616.713	9.471	257° 12' 08"	16.234	789243.718842
5-63	-70324.846	48607.477	18.736	167° 26' 07"	-20.386	-990912.026122
					倍 面積	355.573978
					面積	177.78 m ²

座標法面積計算書

地番名	32-12					
点名	X	Y	距離	方向角	$X_{n+1} - X_{n-1}$	$Y_n \cdot (X_{n+1} - X_{n-1})$
5-36	-70345.199	48602.289	9.491	77° 26' 02"	-16.224	-788523.536736
5-62	-70343.134	48611.553	18.736	347° 26' 07"	20.353	989390.938209
5-63	-70324.846	48607.477	4.557	257° 27' 17"	17.298	840812.137146
5-52	-70325.836	48603.028	4.945	257° 27' 22"	-2.064	-100316.649792
5-51	-70326.910	48598.201	18.740	167° 24' 01"	-19.363	-941006.965963
					倍 面積	355.922864
					面積	177.96 m ²

座標法面積計算書

地番名	32-13					
点名	X	Y	距離	方向角	$X_{n+1} - X_n$	$Y_n \cdot (X_{n+1} - X_n)$
5-35	-70345.721	48599.946	2.400	77° 26' 24"	-17.753	-862794.841338
5-36	-70345.199	48602.289	18.740	347° 24' 01"	18.811	914257.658379
5-51	-70326.910	48598.201	2.392	257° 03' 20"	17.753	862763.862353
5-50	-70327.446	48595.869	18.724	167° 25' 25"	-18.811	-914136.891759
					倍 面積	89.787635
					面積	44.89 m ²

座標法面積計算書

地番名	32-14					
点名	X	Y	距離	方向角	$X_{n+1} - X_{n-1}$	$Y_n \cdot (X_{n+1} - X_{n-1})$
5-1	-70346.696	48586.156	2.911	122° 17' 13"	-17.835	-866534.092260
5-3	-70348.251	48588.617	11.608	77° 24' 40"	0.975	47373.901575
5-35	-70345.721	48599.946	18.724	347° 25' 25"	20.805	1011121.876530
5-50	-70327.446	48595.869	13.673	257° 27' 17"	15.305	743759.775045
5-49	-70330.416	48582.522	16.680	167° 25' 00"	-19.250	-935213.548500
					倍 面 積	507.912390
					面 積	253.95 m ²

座標法面積計算書

地番名	32-15					
点名	X	Y	距離	方向角	$X_{n+1} - X_{n-1}$	$Y_n \cdot (X_{n+1} - X_{n-1})$
5-49	-70330.416	48582.522	13.673	77° 27' 17"	-13.681	-664657.483482
5-50	-70327.446	48595.869	2.392	77° 03' 20"	3.506	170377.116714
5-51	-70326.910	48598.201	4.945	77° 27' 22"	1.610	78243.103610
5-52	-70325.836	48603.028	0.685	347° 21' 45"	1.743	84715.077804
5-55	-70325.167	48602.878	15.984	347° 24' 25"	16.269	790720.222182
5-56	-70309.567	48599.393	0.368	347° 17' 08"	15.959	775597.712887
5-57	-70309.208	48599.312	21.001	257° 28' 05"	-4.198	-204019.911776
5-48	-70313.765	48578.811	17.059	167° 26' 09"	-21.208	-1030259.423688
倍面積						716.414251
面積						358.20 m ²