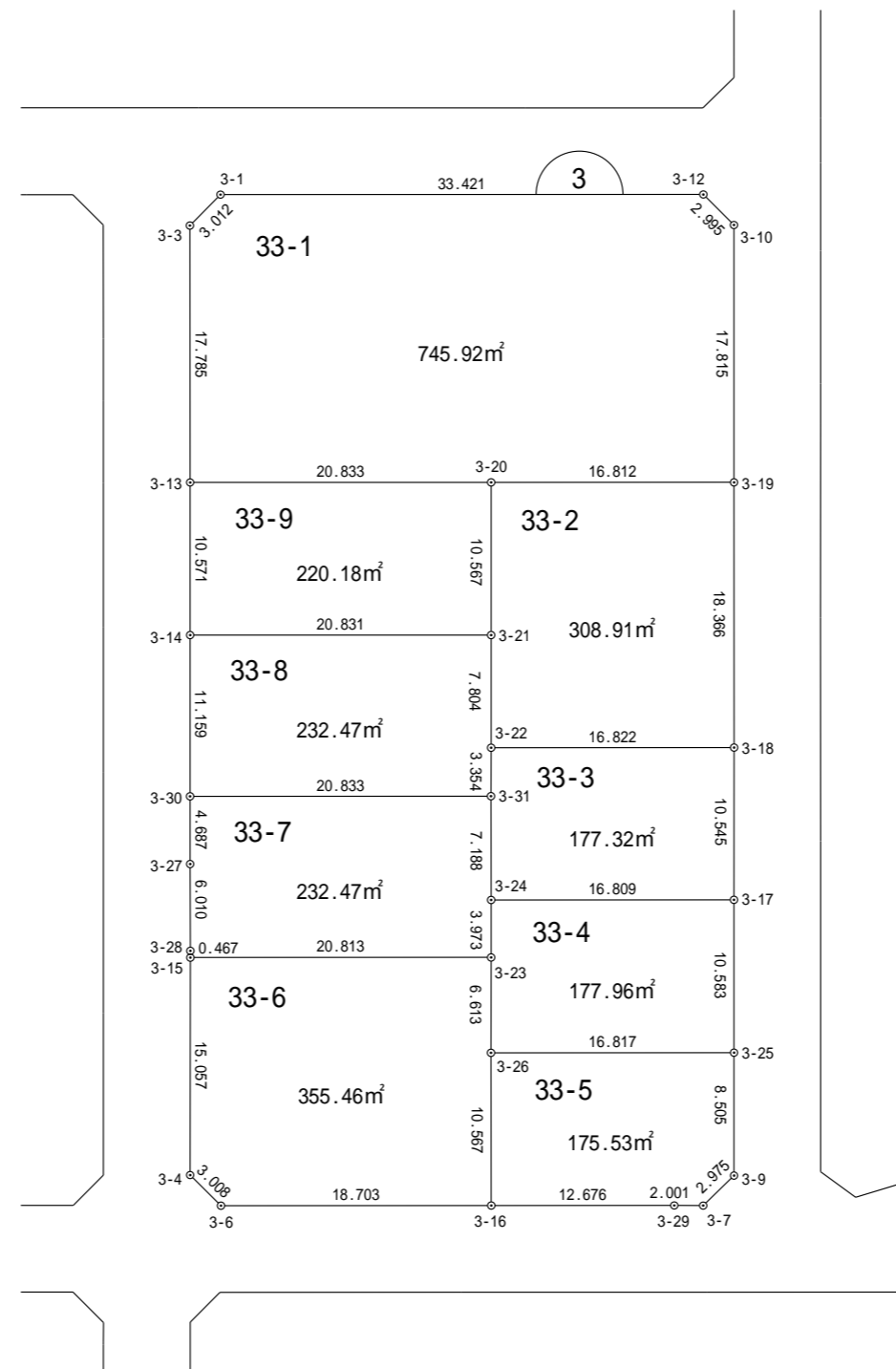
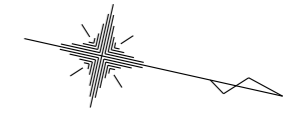


一宮町東浪見土地区画整理事業 画地確定図

長生郡一宮町東野



縮尺 1:500

座標法面積計算書

地番名	33-1					
点名	X	Y	距離	方向角	$X_{n+1} - X_{n-1}$	$Y_n \cdot (X_{n+1} - X_{n-1})$
3-1	-70363.179	48511.962	3.012	122° 04' 33"	-34.219	-1660030.827678
3-3	-70364.779	48514.515	17.785	77° 24' 08"	2.279	110564.579685
3-13	-70360.900	48531.872	20.833	347° 25' 48"	24.213	1175102.216736
3-20	-70340.566	48527.338	16.812	347° 25' 34"	36.743	1783039.980134
3-19	-70324.157	48523.678	17.815	257° 26' 26"	12.535	608244.303730
3-10	-70328.031	48506.289	2.995	212° 24' 03"	-6.403	-310585.768467
3-12	-70330.560	48504.684	33.421	167° 25' 20"	-35.148	-1704842.633232
倍 面 積						1491.850908
面 積						745.92 m ²

座標法面積計算書

地番名	33-2					
点名	X	Y	距離	方向角	$X_{n+1} - X_{n-1}$	$Y_n \cdot (X_{n+1} - X_{n-1})$
3-20	-70340.566	48527.338	10.567	77° 26' 45"	-14.112	-684817.793856
3-21	-70338.269	48537.653	7.804	77° 27' 48"	3.991	193713.773123
3-22	-70336.575	48545.271	16.822	347° 24' 34"	18.112	879251.948352
3-18	-70320.157	48541.604	18.366	257° 25' 16"	12.418	602789.638472
3-19	-70324.157	48523.678	16.812	167° 25' 34"	-20.409	-990319.744302
					倍 面積	617.821789
					面積	308.91 m ²

座標法面積計算書

地番名	33-3					
点名	X	Y	距離	方向角	$X_{n+1} - X_{n-1}$	$Y_n \cdot (X_{n+1} - X_{n-1})$
3-22	-70336.575	48545.271	3.354	77° 28' 03"	-15.690	-761675.301990
3-31	-70335.847	48548.546	7.188	77° 26' 34"	2.291	111224.718886
3-24	-70334.284	48555.563	16.809	347° 24' 50"	17.969	872494.911547
3-17	-70317.878	48551.900	10.545	257° 31' 08"	14.127	685892.691300
3-18	-70320.157	48541.604	16.822	167° 24' 34"	-18.697	-907582.369988
					倍 面積	354.649755
					面積	177.32 m ²

座標法面積計算書

地番名	33-4					
点名	X	Y	距離	方向角	$X_{n+1} - X_{n-1}$	$Y_n \cdot (X_{n+1} - X_{n-1})$
3-24	-70334.284	48555.563	3.973	77° 24' 42"	-15.540	-754553.449020
3-23	-70333.418	48559.441	6.613	77° 28' 37"	2.300	111686.714300
3-26	-70331.984	48565.897	16.817	347° 24' 09"	17.847	866755.563759
3-25	-70315.571	48562.229	10.583	257° 24' 34"	14.106	685018.802274
3-17	-70317.878	48551.900	16.809	167° 24' 50"	-18.713	-908551.704700
					倍 面積	355.926613
					面積	177.96 m ²

座標法面積計算書

地番名	33-5					
点名	X	Y	距離	方向角	$X_{n+1} - X_{n-1}$	$Y_n \cdot (X_{n+1} - X_{n-1})$
3-26	-70331.984	48565.897	10.567	77° 22' 44"	-14.104	-684973.411288
3-16	-70329.675	48576.209	12.676	347° 25' 27"	14.681	713147.324329
3-29	-70317.303	48573.449	2.001	347° 40' 45"	14.327	695911.803823
3-7	-70315.348	48573.022	2.975	303° 09' 02"	3.582	173988.564804
3-9	-70313.721	48570.531	8.505	257° 26' 15"	-0.223	-10831.228413
3-25	-70315.571	48562.229	16.817	167° 24' 09"	-18.263	-886891.988227
倍面積						351.065028
面積						175.53 m ²

座標法面積計算書

地番名	33-6					
点名	X	Y	距離	方向角	$X_{n+1} - X_{n-1}$	$Y_n \cdot (X_{n+1} - X_{n-1})$
3-15	-70353.731	48563.978	15.057	77° 30' 29"	-17.056	-828307.208768
3-4	-70350.474	48578.679	3.008	32° 13' 17"	5.802	281853.495558
3-6	-70347.929	48580.283	18.703	347° 25' 07"	20.799	1010421.306117
3-16	-70329.675	48576.209	10.567	257° 22' 44"	15.945	774547.652505
3-26	-70331.984	48565.897	6.613	257° 28' 37"	-3.743	-181782.152471
3-23	-70333.418	48559.441	20.813	167° 24' 34"	-21.747	-1056022.163427
倍 面 積						710.929514
面 積						355.46 m ²

座標法面積計算書

地番名	33-7					
点名	X	Y	距離	方向角	$X_{n+1} - X_{n-1}$	$Y_n \cdot (X_{n+1} - X_{n-1})$
3-30	-70356.180	48553.084	4.687	77° 20' 43"	-19.306	-937365.839704
3-27	-70355.153	48557.658	6.010	77° 18' 51"	2.347	113964.823326
3-28	-70353.833	48563.522	0.467	77° 23' 29"	1.422	69057.328284
3-15	-70353.731	48563.978	20.813	347° 24' 34"	20.415	991433.610870
3-23	-70333.418	48559.441	3.973	257° 24' 42"	19.447	944335.449127
3-24	-70334.284	48555.563	7.188	257° 26' 34"	-2.429	-117941.462527
3-31	-70335.847	48548.546	20.833	167° 25' 07"	-21.896	-1063018.963216
倍面積						464.946160
面積						232.47 m ²

座標法面積計算書

地番名	33-8					
点名	X	Y	距離	方向角	$X_{n+1} - X_{n-1}$	$Y_n \cdot (X_{n+1} - X_{n-1})$
3-14	-70358.600	48542.190	11.159	77° 28' 32"	-17.911	-869439.165090
3-30	-70356.180	48553.084	20.833	347° 25' 07"	22.753	1104728.320252
3-31	-70335.847	48548.546	3.354	257° 28' 03"	19.605	951794.244330
3-22	-70336.575	48545.271	7.804	257° 27' 48"	-2.422	-117576.646362
3-21	-70338.269	48537.653	20.831	167° 25' 13"	-22.025	-1069041.807325
					倍 面積	464.945805
					面積	232.47 m ²

座標法面積計算書

地番名	33-9					
点名	X	Y	距離	方向角	$X_{n+1} - X_{n-1}$	$Y_n \cdot (X_{n+1} - X_{n-1})$
3-13	-70360.900	48531.872	10.571	77° 26' 01"	-18.034	-875223.779648
3-14	-70358.600	48542.190	20.831	347° 25' 13"	22.631	1098558.301890
3-21	-70338.269	48537.653	10.567	257° 26' 45"	18.034	875328.034202
3-20	-70340.566	48527.338	20.833	167° 25' 48"	-22.631	-1098222.186278
					倍 面積	440.370166
					面積	220.18 m ²