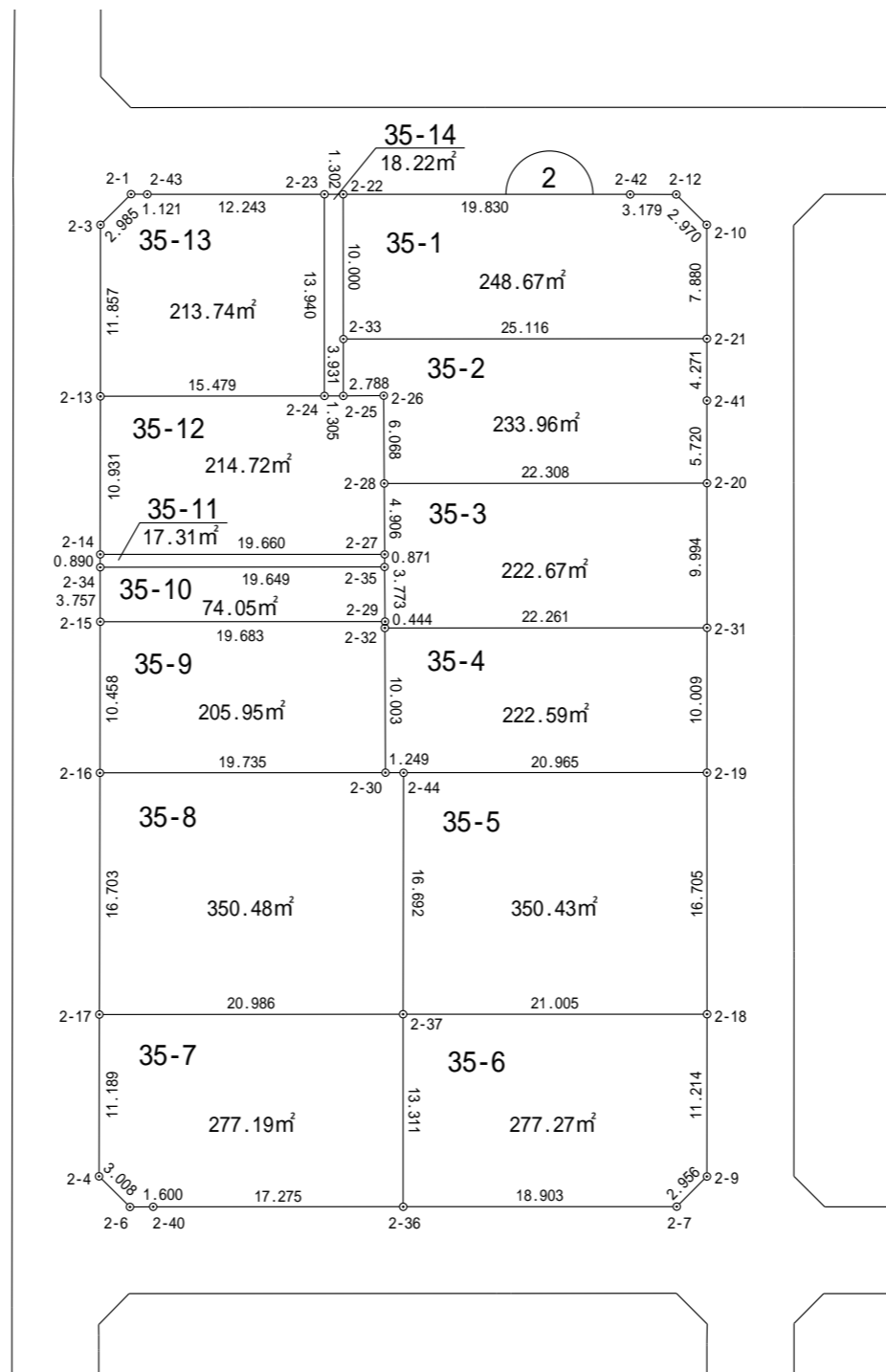
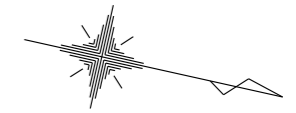


一宮町東浪見土地区画整理事業 画地確定図

長生郡一宮町東野



縮尺 1:500

座標法面積計算書

地番名	35-1					
点名	X	Y	距離	方向角	$X_{n+1} - X_{n-1}$	$Y_n \cdot (X_{n+1} - X_{n-1})$
2-22	-70395.623	48519.187	10.000	77° 23' 08"	-17.173	-833219.998351
2-33	-70393.439	48528.946	25.116	347° 24' 01"	26.696	1295528.742416
2-21	-70368.927	48523.467	7.880	257° 23' 07"	22.791	1105898.336397
2-10	-70370.648	48515.777	2.970	212° 13' 27"	-4.234	-205415.799818
2-12	-70373.161	48514.193	3.179	167° 33' 33"	-5.618	-272552.736274
2-42	-70376.266	48514.878	19.830	167° 27' 01"	-22.462	-1089741.189636
					倍 面 積	497.354734
					面 積	248.67 m ²

座標法面積計算書

地番名	35-2					
点名	X	Y	距離	方向角	$X_{n+1} - X_{n-1}$	$Y_n \cdot (X_{n+1} - X_{n-1})$
2-33	-70393.439	48528.946	3.931	77° 31' 47"	-23.663	-1148340.449198
2-25	-70392.590	48532.785	2.788	347° 07' 49"	3.567	173116.444095
2-26	-70389.872	48532.164	6.068	77° 07' 04"	4.071	197574.439644
2-28	-70388.519	48538.080	22.308	347° 24' 42"	23.125	1122443.100000
2-20	-70366.747	48533.218	5.720	257° 21' 30"	20.520	995901.633360
2-41	-70367.999	48527.636	4.271	257° 27' 03"	-2.180	-105790.246480
2-21	-70368.927	48523.467	25.116	167° 24' 01"	-25.440	-1234437.000480
					倍 面 積	467.920941
					面 積	233.96 m ²

座標法面積計算書

地番名	35-3					
点名	X	Y	距離	方向角	$X_{n+1} - X_{n-1}$	$Y_n \cdot (X_{n+1} - X_{n-1})$
2-28	-70388.519	48538.080	4.906	77° 01' 13"	-20.670	-1003282.113600
2-27	-70387.417	48542.861	0.871	78° 12' 47"	1.280	62134.862080
2-35	-70387.239	48543.714	3.773	76° 55' 16"	1.032	50097.112848
2-29	-70386.385	48547.390	0.444	78° 50' 30"	0.940	45634.546600
2-32	-70386.299	48547.826	22.261	347° 24' 30"	21.812	1058925.180712
2-31	-70364.573	48542.973	9.994	257° 26' 11"	19.552	949112.208096
2-20	-70366.747	48533.218	22.308	167° 24' 42"	-23.946	-1162176.438228
					倍 面 積	445.358508
					面 積	222.67 m ²

座標法面積計算書

地番名	35-4					
点名	X	Y	距離	方向角	$X_{n+1} - X_{n-1}$	$Y_n \cdot (X_{n+1} - X_{n-1})$
2-32	-70386.299	48547.826	10.003	77° 11' 21"	-19.508	-947070.989608
2-30	-70384.081	48557.580	1.249	347° 42' 36"	3.439	166989.517620
2-44	-70382.860	48557.314	20.965	347° 24' 34"	21.682	1052819.682148
2-19	-70362.399	48552.744	10.009	257° 27' 23"	18.287	887884.029528
2-31	-70364.573	48542.973	22.261	167° 24' 30"	-23.900	-1160177.054700
					倍 面積	445.184988
					面積	222.59 m ²

座標法面積計算書

地番名	35-5					
点名	X	Y	距離	方向角	$X_{n+1} - X_{n-1}$	$Y_n \cdot (X_{n+1} - X_{n-1})$
2-44	-70382.860	48557.314	16.692	77° 34' 38"	-16.870	-819161.887180
2-37	-70379.269	48573.616	21.005	347° 26' 43"	24.094	1170332.703904
2-18	-70358.766	48569.050	16.705	257° 26' 22"	16.870	819359.873500
2-19	-70362.399	48552.744	20.965	167° 24' 34"	-24.094	-1169829.813936
					倍 面積	700.876288
					面積	350.43 m ²

座標法面積計算書

地番名	35-6					
点名	X	Y	距離	方向角	$X_{n+1} - X_{n-1}$	$Y_n \cdot (X_{n+1} - X_{n-1})$
2-37	-70379.269	48573.616	13.311	77° 24' 13"	-17.600	-854895.641600
2-36	-70376.366	48586.607	18.903	347° 25' 26"	21.353	1037469.819271
2-7	-70357.916	48582.491	2.956	302° 27' 33"	20.037	973447.372167
2-9	-70356.329	48579.996	11.214	257° 26' 54"	-0.850	-41292.996600
2-18	-70358.766	48569.050	21.005	167° 26' 43"	-22.940	-1114174.007000
					倍 面積	554.546238
					面積	277.27 m ²

座標法面積計算書

地番名	35-7					
点名	X	Y	距離	方向角	$X_{n+1} - X_{n-1}$	$Y_n \cdot (X_{n+1} - X_{n-1})$
2-17	-70399.749	48578.197	11.189	77° 32' 46"	-18.067	-877662.285199
2-4	-70397.336	48589.123	3.008	32° 06' 37"	4.961	241050.639203
2-6	-70394.788	48590.722	1.600	347° 13' 22"	4.109	199659.276698
2-40	-70393.227	48590.368	17.275	347° 25' 32"	18.422	895131.759296
2-36	-70376.366	48586.607	13.311	257° 24' 13"	13.958	678171.860506
2-37	-70379.269	48573.616	20.986	167° 23' 30"	-23.383	-1135796.862928
					倍 面積	554.387576
					面積	277.19 m ²

座標法面積計算書

地番名	35-8					
点名	X	Y	距離	方向角	$X_{n+1} - X_{n-1}$	$Y_n \cdot (X_{n+1} - X_{n-1})$
2-16	-70403.341	48561.884	16.703	77° 34' 55"	-15.668	-760867.598512
2-17	-70399.749	48578.197	20.986	347° 23' 30"	24.072	1169374.358184
2-37	-70379.269	48573.616	16.692	257° 34' 38"	16.889	820359.800624
2-44	-70382.860	48557.314	1.249	167° 42' 36"	-4.812	-233657.794968
2-30	-70384.081	48557.580	19.735	167° 24' 11"	-20.481	-994507.795980
					倍 面積	700.969348
					面積	350.48 m ²

座標法面積計算書

地番名	35-9					
点名	X	Y	距離	方向角	$X_{n+1} - X_{n-1}$	$Y_n \cdot (X_{n+1} - X_{n-1})$
2-15	-70405.597	48551.672	10.458	77° 32' 33"	-16.956	-823242.150432
2-16	-70403.341	48561.884	19.735	347° 24' 11"	21.516	1044857.496144
2-30	-70384.081	48557.580	10.003	257° 11' 21"	17.042	827518.278360
2-32	-70386.299	48547.826	0.444	258° 50' 30"	-2.304	-111854.191104
2-29	-70386.385	48547.390	19.683	167° 26' 07"	-19.298	-936867.532220
					倍 面積	411.900748
					面積	205.95 m ²

座標法面積計算書

地番名	35-10					
点名	X	Y	距離	方向角	$X_{n+1} - X_{n-1}$	$Y_n \cdot (X_{n+1} - X_{n-1})$
2-34	-70406.414	48548.004	3.757	77° 26' 35"	-18.358	-891244.257432
2-15	-70405.597	48551.672	19.683	347° 26' 07"	20.029	972441.438488
2-29	-70386.385	48547.390	3.773	256° 55' 16"	18.358	891232.985620
2-35	-70387.239	48543.714	19.649	167° 23' 20"	-20.029	-972282.047706
					倍 面積	148.118970
					面積	74.05 m ²

座標法面積計算書

地番名	35-11					
点名	X	Y	距離	方向角	$X_{n+1} - X_{n-1}$	$Y_n \cdot (X_{n+1} - X_{n-1})$
2-14	-70406.607	48547.135	0.890	77° 28' 41"	-18.997	-922249.923595
2-34	-70406.414	48548.004	19.649	347° 23' 20"	19.368	940277.741472
2-35	-70387.239	48543.714	0.871	258° 12' 47"	18.997	922184.934858
2-27	-70387.417	48542.861	19.660	167° 26' 38"	-19.368	-940178.131848
					倍 面積	34.620887
					面積	17.31 m ²

座標法面積計算書

地番名	35-12					
点名	X	Y	距離	方向角	$X_{n+1} - X_{n-1}$	$Y_n \cdot (X_{n+1} - X_{n-1})$
2-13	-70408.967	48536.461	10.931	77° 31' 57"	-12.744	-618548.658984
2-14	-70406.607	48547.135	19.660	347° 26' 38"	21.550	1046190.759250
2-27	-70387.417	48542.861	4.906	257° 01' 13"	18.088	878043.269768
2-28	-70388.519	48538.080	6.068	257° 07' 04"	-2.455	-119160.986400
2-26	-70389.872	48532.164	2.788	167° 07' 49"	-4.071	-197574.439644
2-25	-70392.590	48532.785	1.305	167° 12' 34"	-3.991	-193694.344935
2-24	-70393.863	48533.074	15.479	167° 21' 39"	-16.377	-794826.152898
倍 面 積						429.446157
面 積						214.72 m ²

座標法面積計算書

地番名	35-13					
点名	X	Y	距離	方向角	$X_{n+1} - X_{n-1}$	$Y_n \cdot (X_{n+1} - X_{n-1})$
2-1	-70409.942	48522.365	2.985	122° 24' 07"	-2.696	-130816.296040
2-3	-70411.542	48524.886	11.857	77° 27' 29"	0.975	47311.763850
2-13	-70408.967	48536.461	15.479	347° 21' 39"	17.679	858076.094019
2-24	-70393.863	48533.074	13.940	257° 26' 18"	12.072	585891.269328
2-23	-70396.895	48519.467	12.243	167° 27' 40"	-14.983	-726967.174061
2-43	-70408.846	48522.125	1.121	167° 38' 54"	-13.047	-633068.164875
倍面積						427.492221
面積						213.74 m ²

座標法面積計算書

地番名	35-14					
点名	X	Y	距離	方向角	$X_{n+1} - X_{n-1}$	$Y_n \cdot (X_{n+1} - X_{n-1})$
2-23	-70396.895	48519.467	13.940	77° 26' 18"	1.760	85394.261920
2-24	-70393.863	48533.074	1.305	347° 12' 34"	4.305	208934.883570
2-25	-70392.590	48532.785	3.931	257° 31' 47"	0.424	20577.900840
2-33	-70393.439	48528.946	10.000	257° 23' 08"	-3.033	-147188.293218
2-22	-70395.623	48519.187	1.302	167° 35' 09"	-3.456	-167682.310272
					倍 面積	36.442840
					面積	18.22 m ²