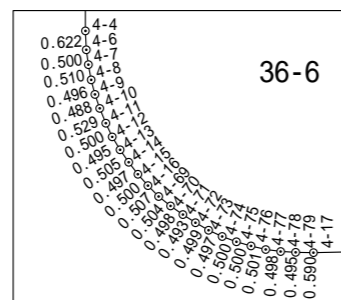
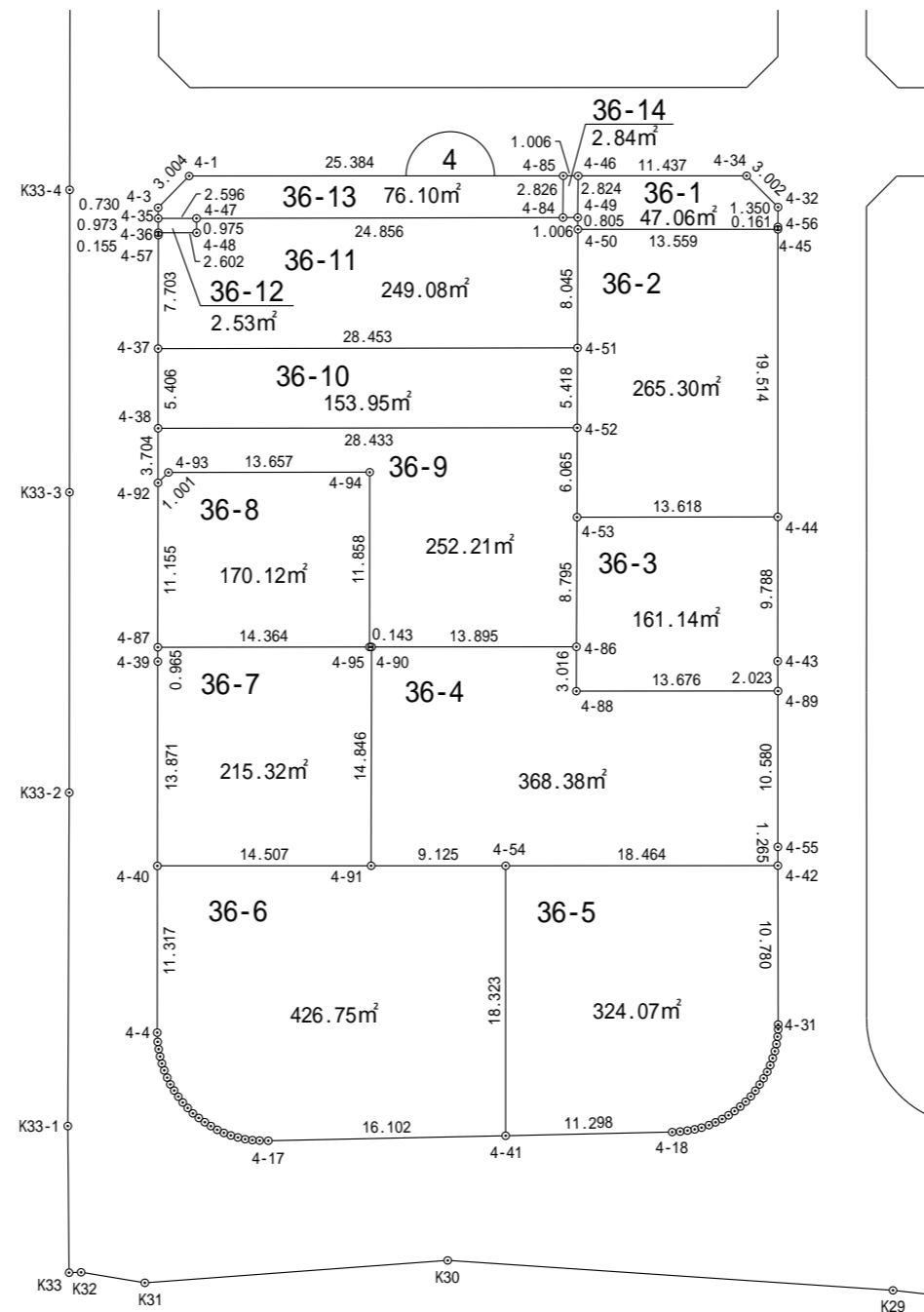
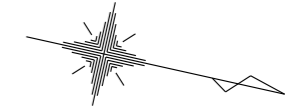
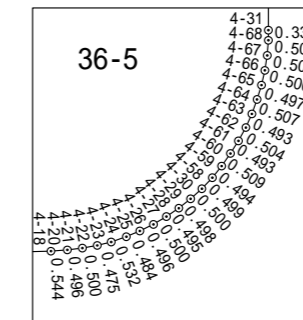


一宮町東浪見土地区画整理事業 画地確定図

長生郡一宮町東野



拡大図 1:250



拡大図 1:250

縮尺 1:500

座標法面積計算書

地番名	36-1					
点名	X	Y	距離	方向角	$X_{n+1} - X_n$	$Y_n \cdot (X_{n+1} - X_n)$
4-46	-70367.794	48590.841	2.824	77° 55' 20"	-10.571	-513653.780211
4-49	-70367.203	48593.603	0.805	76° 56' 48"	0.773	37562.855119
4-50	-70367.021	48594.388	13.559	347° 26' 34"	13.417	651990.903796
4-45	-70353.786	48591.440	0.161	259° 18' 54"	13.205	641649.965200
4-56	-70353.816	48591.281	1.350	257° 54' 30"	-0.313	-15209.070953
4-32	-70354.099	48589.960	3.002	212° 29' 20"	-2.816	-136829.327360
4-34	-70356.632	48588.347	11.437	167° 24' 18"	-13.695	-665417.412165
					倍面積	94.133426
					面積	47.06 m ²

座標法面積計算書

地番名	36-2					
点名	X	Y	距離	方向角	$X_{n+1} - X_{n-1}$	$Y_n \cdot (X_{n+1} - X_{n-1})$
4-50	-70367.021	48594.388	8.045	77° 36' 17"	-11.508	-559224.217104
4-51	-70365.294	48602.246	5.418	77° 40' 56"	2.883	140120.275218
4-52	-70364.138	48607.540	6.065	77° 34' 29"	2.461	119623.155940
4-53	-70362.833	48613.463	13.618	347° 22' 56"	14.595	709513.492485
4-44	-70349.543	48610.488	19.514	257° 26' 32"	9.047	439779.084936
4-45	-70353.786	48591.440	13.559	167° 26' 34"	-17.478	-849281.188320
倍 面 積						530.603155
面 積						265.30 m ²

座標法面積計算書

地番名	36-3					
点名	X	Y	距離	方向角	$X_{n+1} - X_{n-1}$	$Y_n \cdot (X_{n+1} - X_{n-1})$
4-53	-70362.833	48613.463	8.795	77° 41' 27"	-11.415	-554922.680145
4-86	-70360.958	48622.056	3.016	77° 36' 48"	2.522	122624.825232
4-88	-70360.311	48625.002	13.676	347° 23' 04"	13.993	680409.652986
4-89	-70346.965	48622.015	2.023	257° 02' 06"	12.892	626835.017380
4-43	-70347.419	48620.043	9.788	257° 28' 03"	-2.578	-125342.470854
4-44	-70349.543	48610.488	13.618	167° 22' 56"	-15.414	-749282.062032
					倍 面 積	322.282567
					面 積	161.14 m ²

座標法面積計算書

地番名	36-4					
点名	X	Y	距離	方向角	$X_{n+1} - X_{n-1}$	$Y_n \cdot (X_{n+1} - X_{n-1})$
4-90	-70374.518	48625.091	14.846	77° 33' 39"	-10.362	-503853.192942
4-91	-70371.320	48639.589	9.125	347° 25' 00"	12.104	588733.585256
4-54	-70362.414	48637.601	18.464	347° 24' 56"	26.927	1309664.682127
4-42	-70344.393	48633.578	1.265	257° 24' 09"	17.745	863002.841610
4-55	-70344.669	48632.343	10.580	257° 27' 59"	-2.572	-125082.386196
4-89	-70346.965	48622.015	13.676	167° 23' 04"	-15.642	-760545.558630
4-88	-70360.311	48625.002	3.016	257° 36' 48"	-13.993	-680409.652986
4-86	-70360.958	48622.056	13.895	167° 23' 02"	-14.207	-690773.549592
倍面積						736.768647
面積						368.38 m ²

座標法面積計算書

地番名	36-5					
点名	X	Y	距離	方向角	$X_{n+1} - X_n$	$Y_n \cdot (X_{n+1} - X_n)$
4-54	-70362.414	48637.601	18.323	77° 26' 56"	-14.039	-682823.280439
4-41	-70358.432	48655.487	11.298	346° 12' 22"	14.955	727642.808085
4-18	-70347.459	48652.793	0.544	343° 07' 46"	11.494	559215.202742
4-20	-70346.938	48652.635	0.496	340° 21' 42"	0.989	48117.456015
4-21	-70346.470	48652.468	0.500	337° 25' 59"	0.930	45246.795240
4-22	-70346.008	48652.276	0.475	333° 48' 43"	0.889	43251.873364
4-23	-70345.581	48652.066	0.532	327° 53' 31"	0.878	42716.513948
4-24	-70345.130	48651.783	0.484	324° 44' 13"	0.847	41208.060201
4-25	-70344.734	48651.503	0.496	321° 12' 51"	0.783	38094.126849
4-26	-70344.347	48651.192	0.500	316° 37' 05"	0.751	36537.045192
4-27	-70343.983	48650.848	0.495	313° 17' 03"	0.704	34250.196992
4-28	-70343.643	48650.487	0.498	309° 08' 38"	0.655	31866.068985
4-29	-70343.328	48650.100	0.500	305° 24' 17"	0.605	29433.310500
4-30	-70343.038	48649.692	0.499	300° 59' 00"	0.547	26611.381524
4-58	-70342.781	48649.264	0.494	296° 09' 02"	0.475	23108.400400
4-59	-70342.563	48648.820	0.509	292° 16' 56"	0.411	19994.665020
4-60	-70342.370	48648.349	0.493	289° 54' 13"	0.361	17562.053989
4-61	-70342.202	48647.885	0.504	286° 42' 36"	0.313	15226.788005
4-62	-70342.057	48647.402	0.493	280° 59' 27"	0.239	11626.729078
4-63	-70341.963	48646.918	0.507	277° 28' 31"	0.160	7783.506880
4-64	-70341.897	48646.415	0.497	274° 36' 38"	0.106	5156.519990
4-65	-70341.857	48645.919	0.500	270° 13' 45"	0.042	2043.128598
4-66	-70341.855	48645.419	0.500	266° 12' 59"	-0.031	-1508.007989
4-67	-70341.888	48644.920	0.502	261° 38' 39"	-0.106	-5156.361520
4-68	-70341.961	48644.423	0.333	257° 42' 48"	-0.144	-7004.796912
4-31	-70342.032	48644.097	10.780	257° 20' 58"	-2.432	-118302.443904
4-42	-70344.393	48633.578	18.464	167° 24' 56"	-20.382	-991249.586796
					倍面積	648.154037
					面積	324.07 m ²

座標法面積計算書

地番名	36-6					
点名	X	Y	距離	方向角	$X_{n+1} - X_n$	$Y_n \cdot (X_{n+1} - X_n)$
4-40	-70385.479	48642.750	11.317	77° 28' 54"	-11.706	-569412.031500
4-4	-70383.026	48653.798	0.622	74° 37' 25"	2.618	127375.643164
4-6	-70382.861	48654.398	0.500	69° 32' 16"	0.340	16542.495320
4-7	-70382.686	48654.867	0.510	67° 11' 56"	0.373	18148.265391
4-8	-70382.488	48655.338	0.496	62° 39' 39"	0.426	20727.173988
4-9	-70382.260	48655.779	0.488	58° 48' 54"	0.481	23403.429699
4-10	-70382.007	48656.197	0.529	54° 50' 23"	0.558	27150.157926
4-11	-70381.702	48656.630	0.500	52° 27' 59"	0.610	29680.544300
4-12	-70381.397	48657.027	0.495	46° 03' 45"	0.649	31578.410523
4-13	-70381.053	48657.384	0.505	42° 54' 52"	0.714	34741.372176
4-14	-70380.683	48657.728	0.497	39° 46' 34"	0.752	36590.611456
4-15	-70380.301	48658.046	0.500	36° 17' 49"	0.785	38196.566110
4-16	-70379.898	48658.342	0.507	33° 05' 42"	0.828	40289.107176
4-69	-70379.473	48658.619	0.504	25° 45' 06"	0.879	42770.926101
4-70	-70379.019	48658.838	0.498	22° 17' 33"	0.915	44522.836770
4-71	-70378.558	48659.027	0.493	20° 16' 15"	0.924	44960.940948
4-72	-70378.095	48659.198	0.499	17° 20' 50"	0.940	45739.646120
4-73	-70377.618	48659.347	0.497	12° 18' 14"	0.963	46858.951161
4-74	-70377.132	48659.453	0.500	7° 27' 58"	0.982	47783.582846
4-75	-70376.636	48659.518	0.500	3° 47' 01"	0.995	48416.220410
4-76	-70376.137	48659.551	0.501	1° 01' 45"	1.000	48659.551000
4-77	-70375.636	48659.560	0.498	354° 48' 58"	0.997	48513.581320
4-78	-70375.140	48659.515	0.495	350° 35' 41"	0.985	47929.622275
4-79	-70374.651	48659.434	0.590	348° 40' 16"	1.068	51968.275512
4-17	-70374.072	48659.318	16.102	346° 14' 11"	16.219	789205.478642
4-41	-70358.432	48655.487	18.323	257° 26' 56"	11.658	567225.667446
4-54	-70362.414	48637.601	9.125	167° 25' 00"	-12.888	-626841.401688
4-91	-70371.320	48639.589	14.507	167° 24' 54"	-23.065	-1121872.120285
					倍面積	853.504307
					面積	426.75 m ²

座標法面積計算書

地番名	36-7					
点名	X	Y	距離	方向角	$X_{n+1} - X_{n-1}$	$Y_n \cdot (X_{n+1} - X_{n-1})$
4-87	-70388.675	48628.261	0.965	77° 30' 12"	-13.808	-671459.027888
4-39	-70388.466	48629.204	13.871	77° 33' 53"	3.196	155418.935984
4-40	-70385.479	48642.750	14.507	347° 24' 54"	17.146	834028.591500
4-91	-70371.320	48639.589	14.846	257° 33' 39"	10.961	533138.535029
4-90	-70374.518	48625.091	0.143	167° 54' 19"	-3.338	-162310.553758
4-95	-70374.658	48625.121	14.364	167° 22' 24"	-14.157	-688385.837997
倍面積						430.642870
面積						215.32 m ²

座標法面積計算書

地番名	36-8					
点名	X	Y	距離	方向角	$X_{n+1} - X_{n-1}$	$Y_n \cdot (X_{n+1} - X_{n-1})$
4-92	-70391.086	48617.369	11.155	77° 31' 07"	1.871	90963.097399
4-87	-70388.675	48628.261	14.364	347° 22' 24"	16.428	798865.071708
4-95	-70374.658	48625.121	11.858	257° 31' 59"	11.457	557098.011297
4-94	-70377.218	48613.542	13.657	167° 23' 03"	-15.888	-772371.955296
4-93	-70390.546	48616.525	1.001	122° 36' 42"	-13.868	-674213.968700
					倍 面積	340.256408
					面積	170.12 m ²

座標法面積計算書

地番名	36-9					
点名	X	Y	距離	方向角	$X_{n+1} - X_{n-1}$	$Y_n \cdot (X_{n+1} - X_{n-1})$
4-38	-70391.885	48613.752	3.704	77° 32' 36"	-26.948	-1310043.388896
4-92	-70391.086	48617.369	1.001	302° 36' 42"	1.339	65098.657091
4-93	-70390.546	48616.525	13.657	347° 23' 03"	13.868	674213.968700
4-94	-70377.218	48613.542	11.858	77° 31' 59"	15.888	772371.955296
4-95	-70374.658	48625.121	0.143	347° 54' 19"	2.700	131287.826700
4-90	-70374.518	48625.091	13.895	347° 23' 02"	13.700	666163.746700
4-86	-70360.958	48622.056	8.795	257° 41' 27"	11.685	568148.724360
4-53	-70362.833	48613.463	6.065	257° 34' 29"	-3.180	-154590.812340
4-52	-70364.138	48607.540	28.433	167° 22' 51"	-29.052	-1412146.252080
					倍 面 積	504.425531
					面 積	252.21 m ²

座標法面積計算書

地番名	36-10					
点名	X	Y	距離	方向角	$X_{n+1} - X_{n-1}$	$Y_n \cdot (X_{n+1} - X_{n-1})$
4-37	-70393.058	48608.474	5.406	77° 28' 12"	-26.591	-1292547.932134
4-38	-70391.885	48613.752	28.433	347° 22' 51"	28.920	1405909.707840
4-52	-70364.138	48607.540	5.418	257° 40' 56"	26.591	1292523.096140
4-51	-70365.294	48602.246	28.453	167° 21' 24"	-28.920	-1405576.954320
					倍 面積	307.917526
					面積	153.95 m ²

座標法面積計算書

地番名	36-11					
点名	X	Y	距離	方向角	$X_{n+1} - X_{n-1}$	$Y_n \cdot (X_{n+1} - X_{n-1})$
4-36	-70394.756	48600.800	0.155	77° 01' 58"	-2.505	-121745.004000
4-57	-70394.721	48600.952	7.703	77° 32' 00"	1.698	82524.416496
4-37	-70393.058	48608.474	28.453	347° 21' 24"	29.427	1430401.564398
4-51	-70365.294	48602.246	8.045	257° 36' 17"	26.037	1265456.679102
4-50	-70367.021	48594.388	0.805	256° 56' 48"	-1.909	-92766.686692
4-49	-70367.203	48593.603	1.006	167° 19' 01"	-1.164	-56562.953892
4-84	-70368.185	48593.824	24.856	167° 18' 56"	-25.232	-1226119.367168
4-47	-70392.435	48599.282	0.975	77° 01' 54"	-24.031	-1167889.345742
4-48	-70392.216	48600.233	2.602	167° 24' 59"	-2.321	-112801.140793
					倍 面 積	498.161709
					面 積	249.08 m ²

座標法面積計算書

地番名	36-12					
点名	X	Y	距離	方向角	$X_{n+1} - X_{n-1}$	$Y_n \cdot (X_{n+1} - X_{n-1})$
4-35	-70394.969	48599.850	0.973	77° 21' 46"	-2.321	-112800.251850
4-36	-70394.756	48600.800	2.602	347° 24' 59"	2.753	133798.002400
4-48	-70392.216	48600.233	0.975	257° 01' 54"	2.321	112801.140793
4-47	-70392.435	48599.282	2.596	167° 21' 57"	-2.753	-133793.823346
倍 面積						5.067997
面積						2.53 m ²

座標法面積計算書

地番名	36-13					
点名	X	Y	距離	方向角	$X_{n+1} - X_{n-1}$	$Y_n \cdot (X_{n+1} - X_{n-1})$
4-1	-70393.551	48596.587	3.004	121° 50' 37"	-26.360	-1281006.033320
4-3	-70395.136	48599.139	0.730	76° 46' 55"	-1.418	-68913.579102
4-35	-70394.969	48599.850	2.596	347° 21' 57"	2.701	131268.194850
4-47	-70392.435	48599.282	24.856	347° 18' 56"	26.784	1301683.169088
4-84	-70368.185	48593.824	2.826	257° 55' 51"	23.659	1149681.282016
4-85	-70368.776	48591.060	25.384	167° 25' 26"	-25.366	-1232560.827960
					倍 面 積	152.205572
					面 積	76.10 m ²

座標法面積計算書

地番名	36-14					
点名	X	Y	距離	方向角	$X_{n+1} - X_{n-1}$	$Y_n \cdot (X_{n+1} - X_{n-1})$
4-46	-70367.794	48590.841	1.006	167° 25' 41"	-1.573	-76433.392893
4-85	-70368.776	48591.060	2.826	77° 55' 51"	-0.391	-18999.104460
4-84	-70368.185	48593.824	1.006	347° 19' 01"	1.573	76438.085152
4-49	-70367.203	48593.603	2.824	257° 55' 20"	0.391	19000.098773
					倍 面積	5.686572
					面積	2.84 m ²