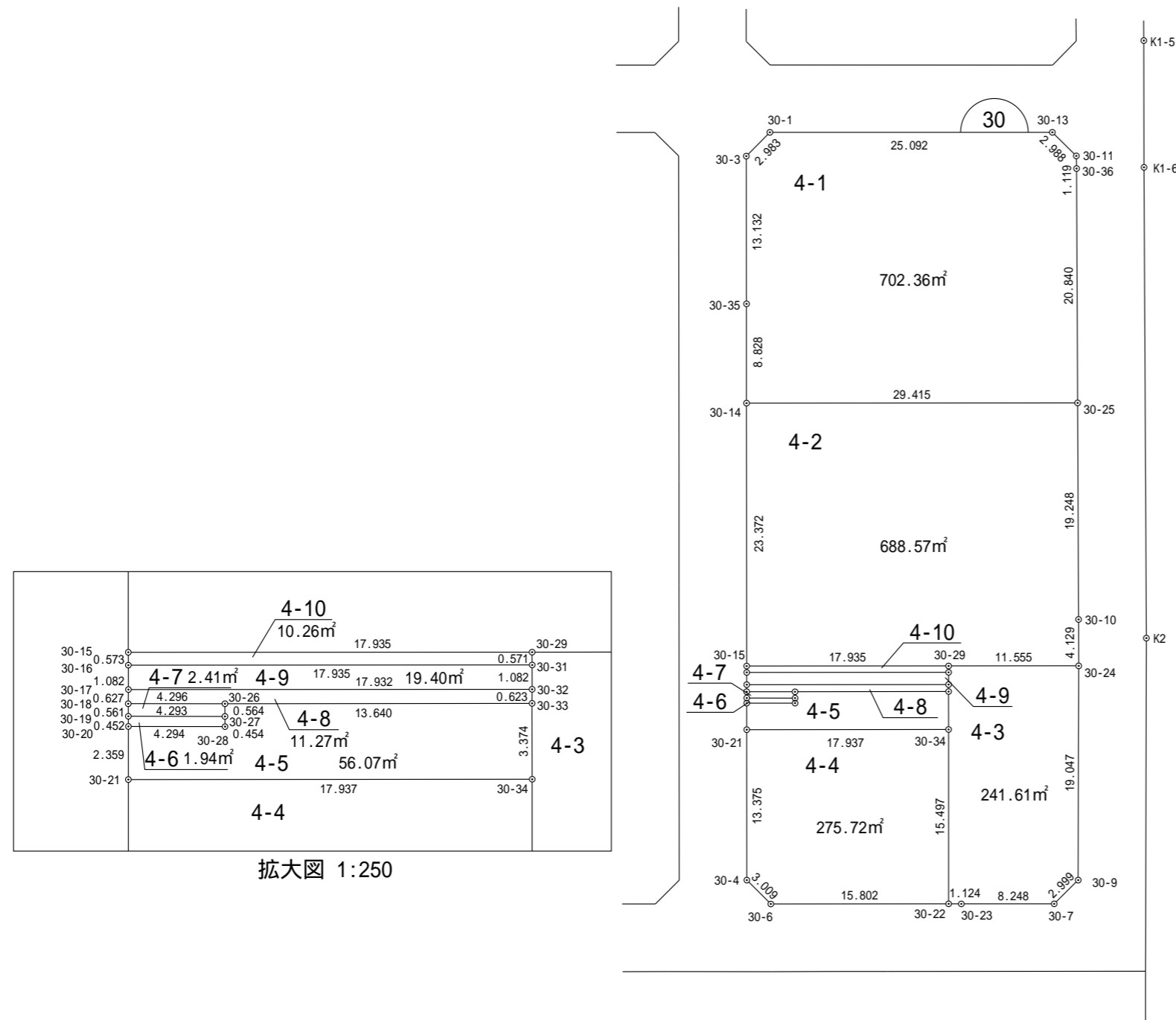
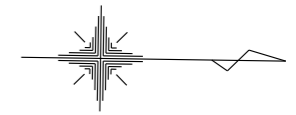


一宮町東浪見土地区画整理事業 画地確定図

長生郡一宮町東野



拡大図 1:250

縮尺 1:500

座標法面積計算書

地番名	4-1					
点名	X	Y	距離	方向角	$X_{n+1} - X_{n-1}$	$Y_n \cdot (X_{n+1} - X_{n-1})$
30-1	-69726.914	48444.108	2.983	133° 58' 04"	-27.161	-1315790.417388
30-3	-69728.985	48446.255	13.132	89° 05' 33"	-1.863	-90255.373065
30-35	-69728.777	48459.386	8.828	89° 09' 46"	0.337	16330.813082
30-14	-69728.648	48468.214	29.415	359° 08' 13"	29.541	1431799.509774
30-25	-69699.236	48467.771	20.840	268° 54' 40"	29.016	1406340.843336
30-36	-69699.632	48446.934	1.119	268° 18' 39"	-0.429	-20783.734686
30-11	-69699.665	48445.815	2.988	223° 45' 10"	-2.192	-106193.226480
30-13	-69701.824	48443.748	25.092	179° 10' 41"	-27.249	-1320043.689252
					倍 面 積	1404.725321
					面 積	702.36 m ²

座標法面積計算書

地番名	4-2					
点名	X	Y	距離	方向角	$X_{n+1} - X_{n-1}$	$Y_n \cdot (X_{n+1} - X_{n-1})$
30-14	-69728.648	48468.214	23.372	89° 08' 13"	-29.060	-1408486.298840
30-15	-69728.296	48491.584	17.935	359° 09' 12"	18.286	886717.105024
30-29	-69710.362	48491.319	11.555	359° 08' 14"	29.488	1429912.014672
30-24	-69698.808	48491.145	4.129	269° 01' 43"	11.484	556872.309180
30-10	-69698.878	48487.016	19.248	268° 56' 03"	-0.428	-20752.442848
30-25	-69699.236	48467.771	29.415	179° 08' 13"	-29.770	-1442885.542670
倍面積						1377.144518
面積						688.57 m ²

座標法面積計算書

地番名	4-3					
点名	X	Y	距離	方向角	$X_{n+1} - X_{n-1}$	$Y_n \cdot (X_{n+1} - X_{n-1})$
30-29	-69710.362	48491.319	0.571	88° 53' 47"	-11.543	-559735.295217
30-31	-69710.351	48491.890	1.082	89° 12' 21"	0.026	1260.789140
30-32	-69710.336	48492.972	0.623	89° 32' 25"	0.020	969.859440
30-33	-69710.331	48493.595	3.374	89° 04' 59"	0.059	2861.122105
30-34	-69710.277	48496.969	15.497	89° 10' 05"	0.279	13530.654351
30-22	-69710.052	48512.465	1.124	359° 29' 25"	1.349	65443.315285
30-23	-69708.928	48512.455	8.248	359° 07' 54"	9.372	454658.728260
30-7	-69700.680	48512.330	2.999	314° 30' 50"	10.351	502151.127830
30-9	-69698.577	48510.191	19.047	269° 18' 18"	1.872	90811.077552
30-24	-69698.808	48491.145	11.555	179° 08' 14"	-11.785	-571468.143825
					倍 面 積	483.234921
					面 積	241.61 m ²

座標法面積計算書

地番名	4-4					
点名	X	Y	距離	方向角	$X_{n+1} - X_{n-1}$	$Y_n \cdot (X_{n+1} - X_{n-1})$
30-21	-69728.212	48497.238	13.375	89° 08' 36"	-17.735	-860098.515930
30-4	-69728.012	48510.612	3.009	44° 09' 06"	2.359	114436.533708
30-6	-69725.853	48512.708	15.802	359° 07' 08"	17.960	871288.235680
30-22	-69710.052	48512.465	15.497	269° 10' 05"	15.576	755630.154840
30-34	-69710.277	48496.969	17.937	179° 08' 27"	-18.160	-880704.957040
					倍 面積	551.451258
					面積	275.72 m ²

座標法面積計算書

地番名	4-5					
点名	X	Y	距離	方向角	$X_{n+1} - X_{n-1}$	$Y_n \cdot (X_{n+1} - X_{n-1})$
30-20	-69728.245	48494.879	2.359	89° 11' 55"	-4.261	-206636.679419
30-21	-69728.212	48497.238	17.937	359° 08' 27"	17.968	871398.372384
30-34	-69710.277	48496.969	3.374	269° 04' 59"	17.881	867174.302689
30-33	-69710.331	48493.595	13.640	179° 06' 19"	-13.693	-664022.796335
30-26	-69723.970	48493.808	0.564	88° 59' 03"	-13.629	-660922.109232
30-27	-69723.960	48494.372	0.454	88° 51' 52"	0.019	921.393068
30-28	-69723.951	48494.826	4.294	179° 17' 34"	-4.285	-207800.329410
倍 面 積						112.153745
面 積						56.07 m ²

座標法面積計算書

地番名	4-6					
点名	X	Y	距離	方向角	$X_{n+1} - X_{n-1}$	$Y_n \cdot (X_{n+1} - X_{n-1})$
30-19	-69728.253	48494.427	0.452	88° 59' 10"	-4.285	-207798.619695
30-20	-69728.245	48494.879	4.294	359° 17' 34"	4.302	208624.969458
30-28	-69723.951	48494.826	0.454	268° 51' 52"	4.285	207800.329410
30-27	-69723.960	48494.372	4.293	179° 15' 58"	-4.302	-208622.788344
					倍 面積	3.890829
					面積	1.94 m ²

座標法面積計算書

地番名	4-7					
点名	X	Y	距離	方向角	$X_{n+1} - X_{n-1}$	$Y_n \cdot (X_{n+1} - X_{n-1})$
30-18	-69728.266	48493.866	0.561	88° 40' 21"	-4.283	-207699.228078
30-19	-69728.253	48494.427	4.293	359° 15' 58"	4.306	208817.002662
30-27	-69723.960	48494.372	0.564	268° 59' 03"	4.283	207701.395276
30-26	-69723.970	48493.808	4.296	179° 13' 35"	-4.306	-208814.337248
					倍 面積	4.832612
					面積	2.41 m ²

座標法面積計算書

地番名	4-8					
点名	X	Y	距離	方向角	$X_{n+1} - X_{n-1}$	$Y_n \cdot (X_{n+1} - X_{n-1})$
30-17	-69728.267	48493.239	0.627	89° 54' 31"	-17.930	-869483.775270
30-18	-69728.266	48493.866	4.296	359° 13' 35"	4.297	208378.142202
30-26	-69723.970	48493.808	13.640	359° 06' 19"	17.935	869736.446480
30-33	-69710.331	48493.595	0.623	269° 32' 25"	13.634	661161.674230
30-32	-69710.336	48492.972	17.932	179° 08' 49"	-17.936	-869769.945792
					倍 面積	22.541850
					面積	11.27 m ²

座標法面積計算書

地番名	4-9					
点名	X	Y	距離	方向角	$X_{n+1} - X_{n-1}$	$Y_n \cdot (X_{n+1} - X_{n-1})$
30-16	-69728.285	48492.157	1.082	89° 02' 49"	-17.916	-868785.484812
30-17	-69728.267	48493.239	17.932	359° 08' 49"	17.949	870405.146811
30-32	-69710.336	48492.972	1.082	269° 12' 21"	17.916	868800.086352
30-31	-69710.351	48491.890	17.935	179° 08' 49"	-17.949	-870380.933610
					倍 面積	38.814741
					面積	19.40 m ²

座標法面積計算書

地番名	4-10					
点名	X	Y	距離	方向角	$X_{n+1} - X_{n-1}$	$Y_n \cdot (X_{n+1} - X_{n-1})$
30-15	-69728.296	48491.584	0.573	88° 54' 01"	-17.923	-869114.660032
30-16	-69728.285	48492.157	17.935	359° 08' 49"	17.945	870191.757365
30-31	-69710.351	48491.890	0.571	268° 53' 47"	17.923	869120.144470
30-29	-69710.362	48491.319	17.935	179° 09' 12"	-17.945	-870176.719455
					倍 面積	20.522348
					面積	10.26 m ²